

# PENN TOWNSHIP

Each township has six files containing six sections in each, and one file containing all 36 sections.

Penn01to06.pdf  
Penn07to12.pdf  
Penn13to18.pdf  
Penn19to24.pdf  
Penn25to30.pdf  
Penn31to36.pdf  
PennAll36.pdf

The points are listed starting with the point above the SE corner and continuing in a counter-clockwise rotation around the section. This normally begins with the East point, Northeast, then North, but may also include Witness Corners, and/or Meander Corners.

## **Definitions**

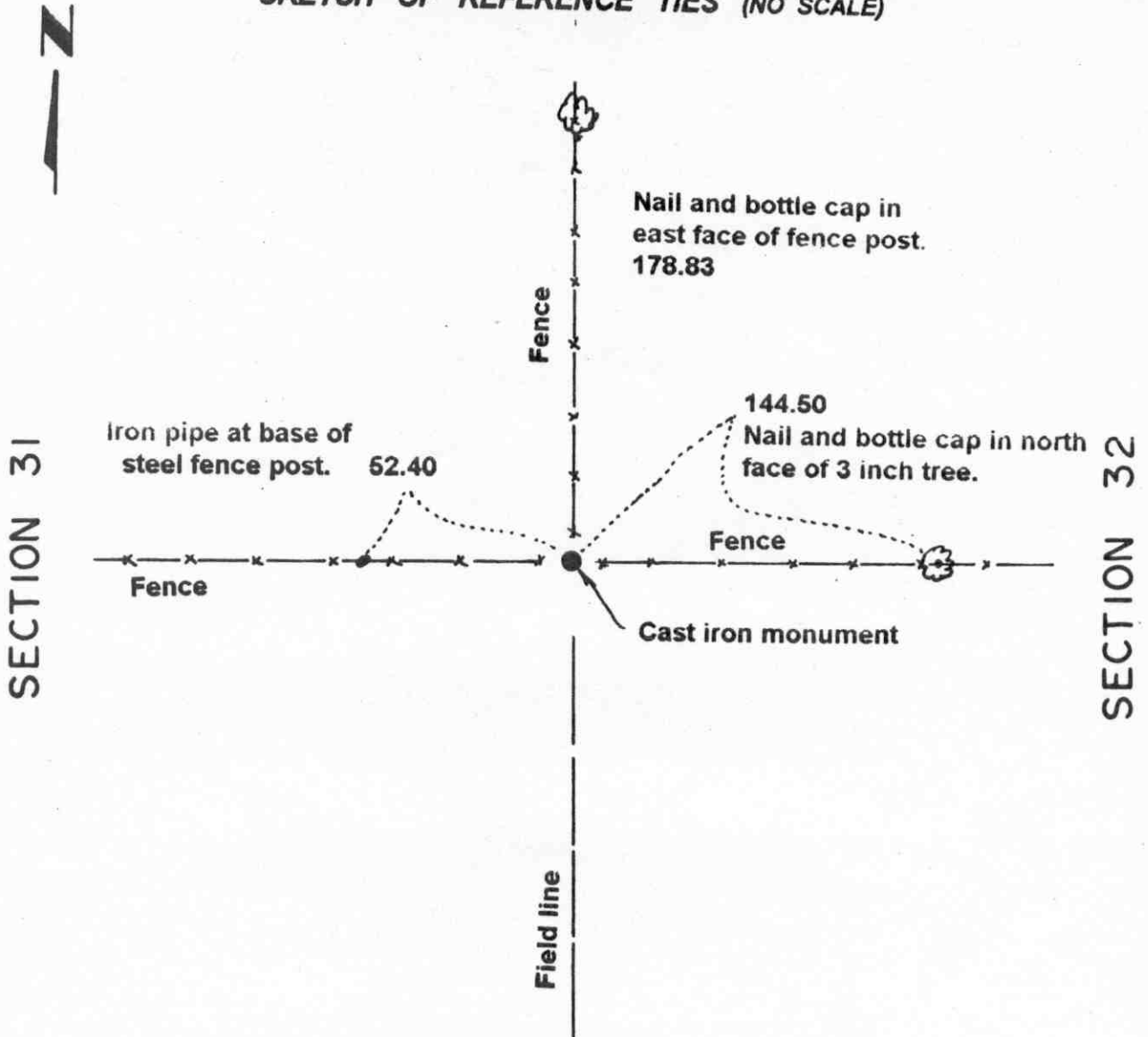
**Witness Corner:** A witness corner “stands in” when the true corner cannot be monumented or occupied because of difficult terrain or obstruction of the corner sight. The witness corner must be on the section line and is usually 5 or 10 chains away from the true corner.

**Meander Corner:** The intersection of a township, range, or section line and the banks of a navigable stream or meandering body of water.

# Certificate of Location of Government Corner

EAST QUARTER corner, Section 31, Township 114 North, Range 29 West

SKETCH OF REFERENCE TIES (NO SCALE)



### Statement of evidence relative to this corner location on sheet 2

I hereby certify that this document was prepared by me or under my direct supervision.

Willard Pellinen  
Willard Pellinen  
McLeod County Surveyor  
License No. 9626.

Date Sept. 11, 1995

### OFFICE OF THE COUNTY RECORDER MCLEOD COUNTY, MINNESOTA

I hereby certify that this document was filed in this office at 9 o'clock A. M. on the 14th day of Sept 19 95.

(Carmen) Helene Mulder, County Recorder

By \_\_\_\_\_, Deputy.

Document No. 268036

**Certificate of Location of Government Corner**  
**East Quarter Corner, Section 31, Township 114 North, Range 29 West**

*July 1855. A. H. Runyon of the General Land Office originally established this corner. He set a post, drove a charred stake, raised mound of earth with trench and pits and planted maclura seeds at the corners of the mound.*

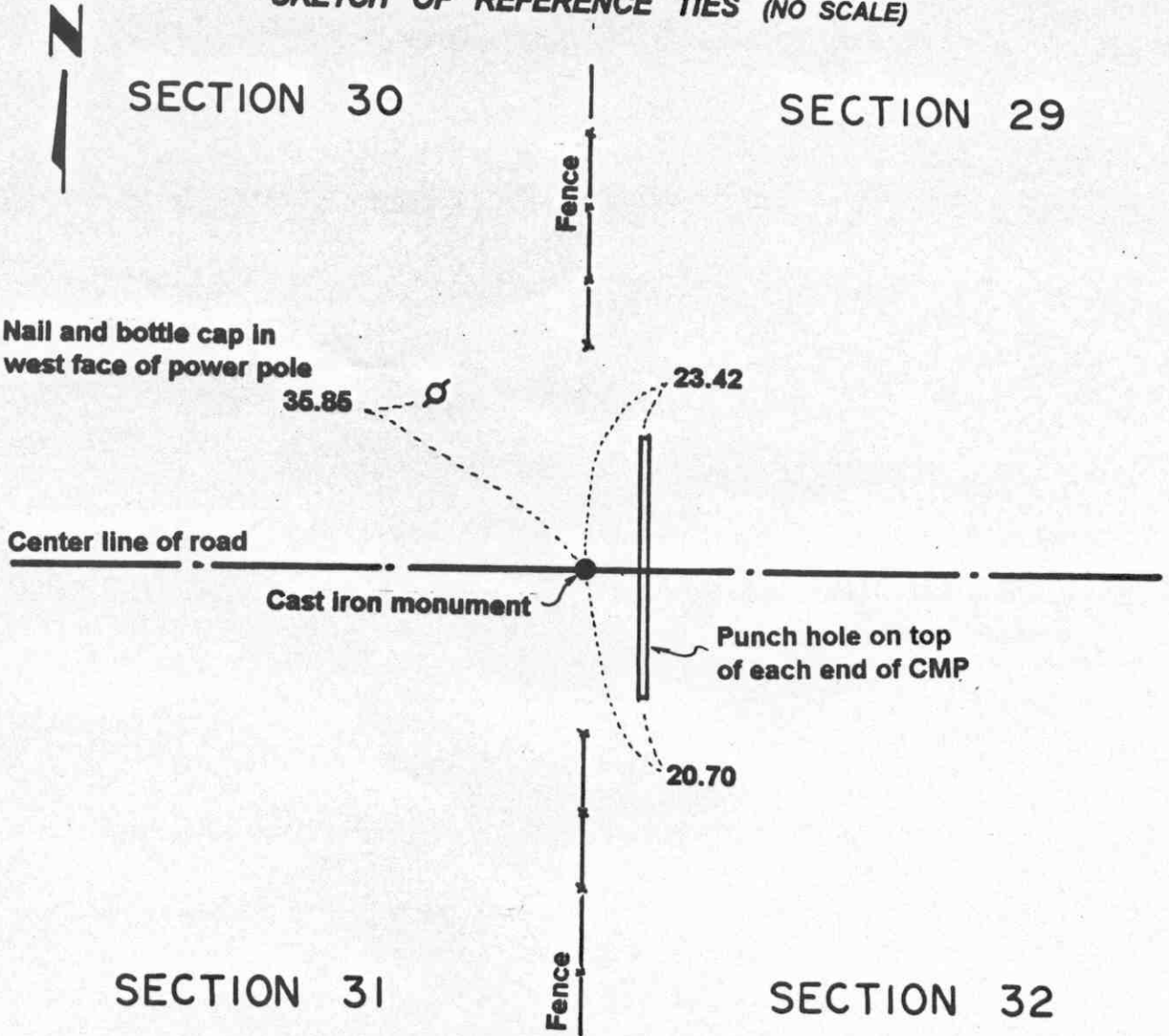
*January 19, 1983. Mr. Gordon Stenzel, 61 years old and had lived in the South Half of Section 32 for 38 years said fence intersection, fences east, west and north, has been accepted by adjacent land owners as being the quarter corner. Mr. Delfert Bussler, 46 years old and who had lived in the Southeast Quarter of Section 31 since 1962, agrees. This falls within 1/2 foot of being half way between the section corners and about 9 feet west of a straight line.*

*June 6, 1983. We set a McLeod County cast iron monument at the corner and took available reference ties.*

# Certificate of Location of Government Corner

NORTHEAST corner, Section 31, Township 114 North, Range 29 West

SKETCH OF REFERENCE TIES (NO SCALE)



## Statement of evidence relative to this corner location on sheet 2

I hereby certify that this document was prepared by me or under my direct supervision.

Willard Pellinen  
Willard Pellinen  
McLeod County Surveyor  
License No. 9628.

Date Dec. 22, 1995

## OFFICE OF THE COUNTY RECORDER MCLEOD COUNTY, MINNESOTA

I hereby certify that this document was filed in this office at 9 o'clock A.M. on the 9th day of January, 19 96.

Carmen Astlie Mulder, County Recorder

By Charleen Engelman, Deputy.

Document No. 270176

**Certificate of Location of Government Corner**  
**Northeast Corner, Section 31, Township 114 North, Range 29 West**

*July 1855. A. H. Runyon of the General Land Office originally established this corner. He set a post, drove a charred stake, raised mound of earth with trench and pits and planted maclura seeds at the corners of the mound.*

*July, 1978. Dickman Knutson, county surveyor, excavated for the corner in the center of the east-west road in line with fences north and south. (John Tupa from Hutchinson with a backhoe) They found no evidence of the government corner. The corner would have been disturbed when a culvert was placed across the road within a few feet of this location.*

*July 22, 1980. Steve Loncorich, in the Southwest Quarter of Section 29 and George Stoller, in the Southeast Quarter of Section 30, agree the corner should be in the center line of the east-west road in line with fences north and south.*

*July 22, 1980. We set a McLeod County cast iron monument at this location and took available reference ties.*

*April 28, 1995. We checked the reference ties.*

# Certificate of Location of Government Corner

North Quarter corner, Section 31, Township 114 North, Range 29 West

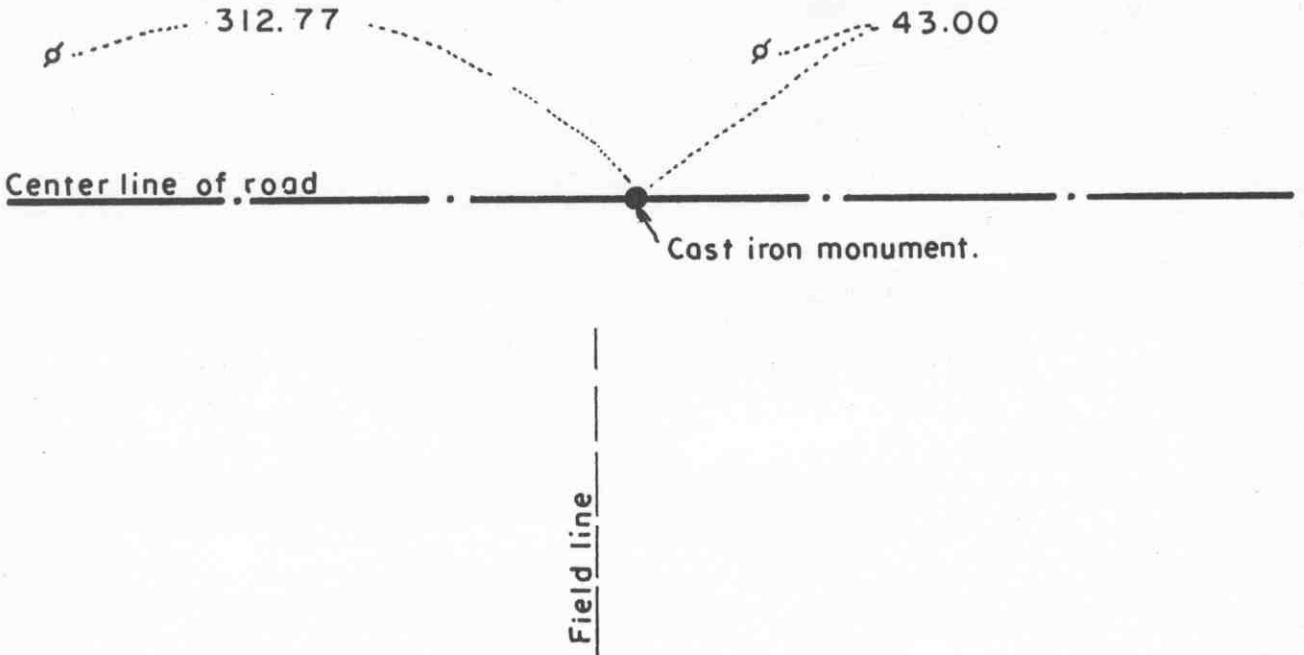
SKETCH OF REFERENCE TIES (NO SCALE)



SECTION 30

Nail and disc in south  
face of power pole.

Nail and bottle cap in  
SE face of power pole.



SECTION 31

Statement of evidence relative to this corner location on sheet 2

I hereby certify that this document was prepared by me or under my direct supervision.

Willard Pellinen  
Willard Pellinen  
McLeod County Surveyor  
License No. 9626.

Date Aug. 7, 1995

OFFICE OF THE COUNTY RECORDER  
MCLEOD COUNTY, MINNESOTA

I hereby certify that this document was filed in this office at 9 o'clock A.M. on the 8th day of August 19 95.

CARMEN ORTUE MALDER, MCLEOD COUNTY RECORDER, County Recorder

By Phyllis Sopkowiak, Deputy.

Document No. 267404

**Certificate of Location of Government Corner**  
**North Quarter Corner, Section 31, Township 114 North, Range 29 West**

*July 1855. A. H. Runyon of the General Land Office originally established this corner. He set a post, drove a charred stake, raised mound of earth with trench and pits and planted maclura seeds at the southeast corner of the mound.*

*July 6, 1978. Dickman Knutson, county surveyor, excavated for the corner. (John Tupa from Hutchinson with a backhoe) They dug in the center line of the east-west road in line with a field division to the south. This location has been accepted by adjacent land owners as the quarter corner. Down 2 feet below the surface of the road, in the original ground, they found a 10 inch by 12 inch by 8 inch stone, They took available reference ties.*

*August 11, 1978. Knutson set a spike at the corner and took additional ties.*

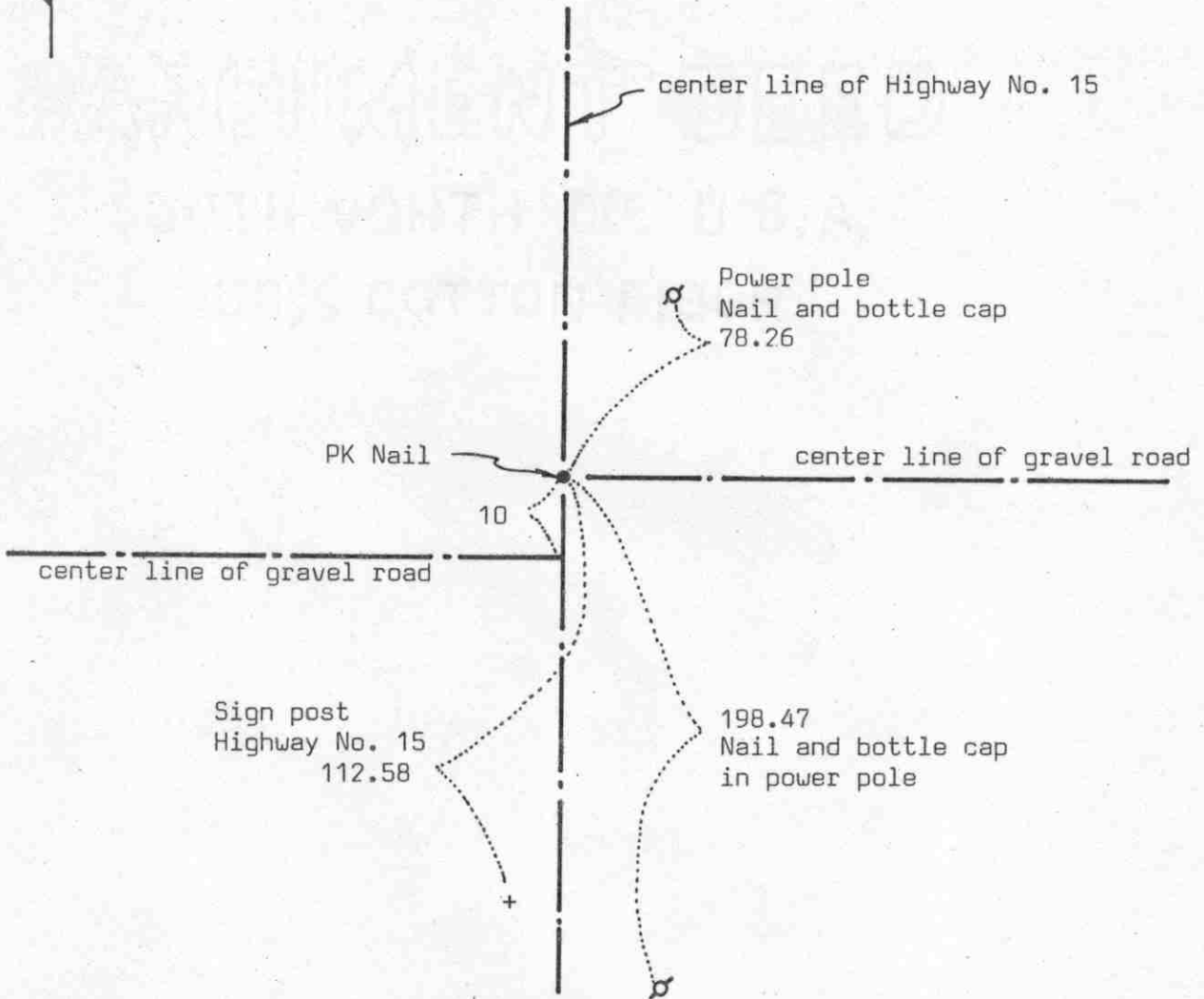
*August 13, 1979. We set a McLeod County cast iron monument at the corner.*

*February 27, 1995. We checked the reference ties.*

# Certificate of Location of Government Corner



SKETCH OF REFERENCE TIES  
(NO SCALE)



Statement of evidence relative to this corner location on sheet 2

I hereby certify that this document was prepared by me or under my direct supervision.

Willard Pellinen

Willard Pellinen  
McLeod County Surveyor  
License No. 9626

Date 4/8/89

OFFICE OF THE COUNTY RECORDER  
MCLEOD COUNTY, MINNESOTA.

I hereby certify that this document was filed in this office at 4 o'clock P.M. on the 20th day of April, 1989.

Carmen Ostlie, County Recorder  
By \_\_\_\_\_, Deputy

Document No. 227816



NORTHEAST corner, Section 36, Township 114 North, Range 30 West

## Certificate of Location of Government Corner

This corner was originally set in 1855 by the government. John Ryan set a post, deposited charcoal, dug pits and trench, built mound and planted osage orange seeds at the corners of the mound.

Highway No. 15 right of way plans show the corner to be on the center line of the highway on P.O.T. 378+96.4.

In June, 1969 McCombs Knutson Associates (Dickman Knutson, county surveyor) had testimony from area residents that the the center line of the road running east is on the section line. MKA set a PK nail on the center line of No. 15 in line with the center line to the east.

On January 31, 1989, we checked the reference ties set by McCombs Knutson and found them good.

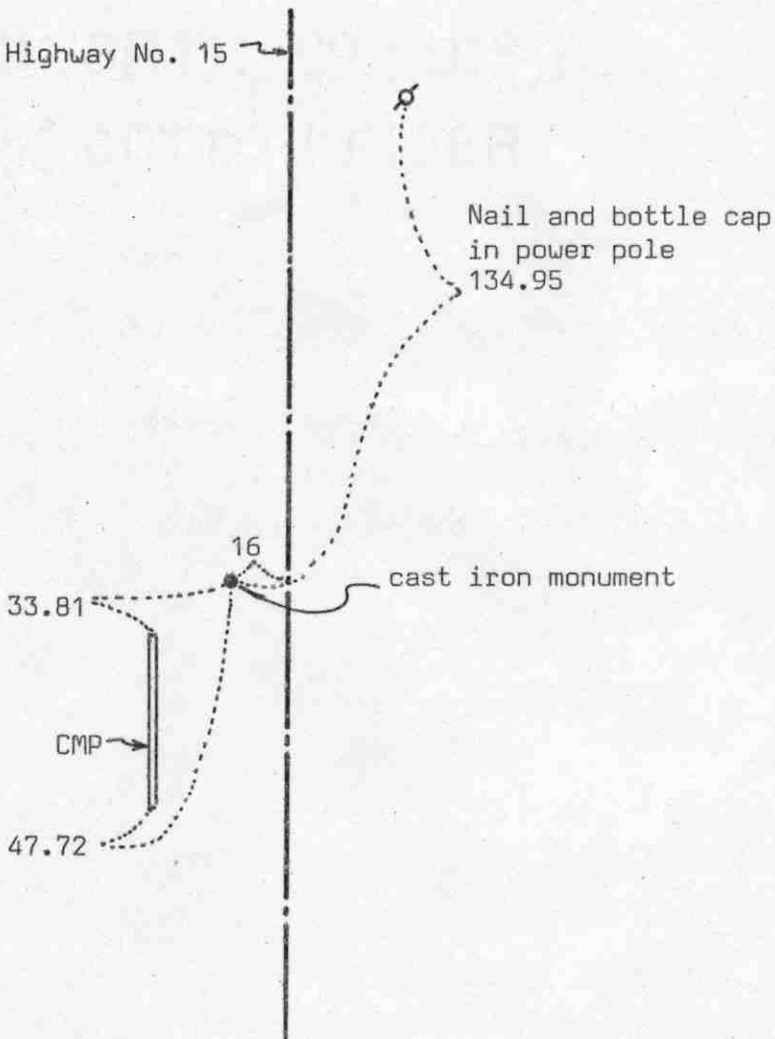
# Certificate of Location of Government Corner



## SKETCH OF REFERENCE TIES

(NO SCALE)

center line of Highway No. 15



Statement of evidence relative to this corner location on sheet 2

I hereby certify that this document was prepared by me or under my direct supervision.

Willard Pellinen

Willard Pellinen  
McLeod County Surveyor  
License No. 9626

Date 4/9/89

OFFICE OF THE COUNTY RECORDER  
MCLEOD COUNTY, MINNESOTA.

I hereby certify that this document was filed in this office at 4 o'clock P.M. on the 20th day of April 1989.

Carmen Jotlie, County Recorder  
By \_\_\_\_\_, Deputy

Document No. 227817

EAST QUARTER corner, Section 36, Township 114 North, Range 30 West

## Certificate of Location of Government Corner

This corner was set by the government in 1855. John Ryan set a post on the north edge of a marsh, deposited charcoal, dug pits and trench, built mound and planted osage orange seeds at the corners of the mound.

State Highway right of way plans show this corner to be 16 feet left of center line station 352+65.0.

In 1969, McCombs Knutson Associates, Dickman Knutson, county surveyor, set a cast iron monument half way between section corners, 16 feet west of the center line.

On November 13, 1970 MKA checked the fence near the center of Section 36 and found it to be within 2 feet of being on the east west quarter line of Section 36.

On October 26, 1983, we found the cast iron monument in good condition and the reference ties good. We found the monument to be within a few tenths of a foot of being half way between section corners.

On January 31, 1989, we checked the reference ties and found the ties and the monument ok.

SOUTHEAST

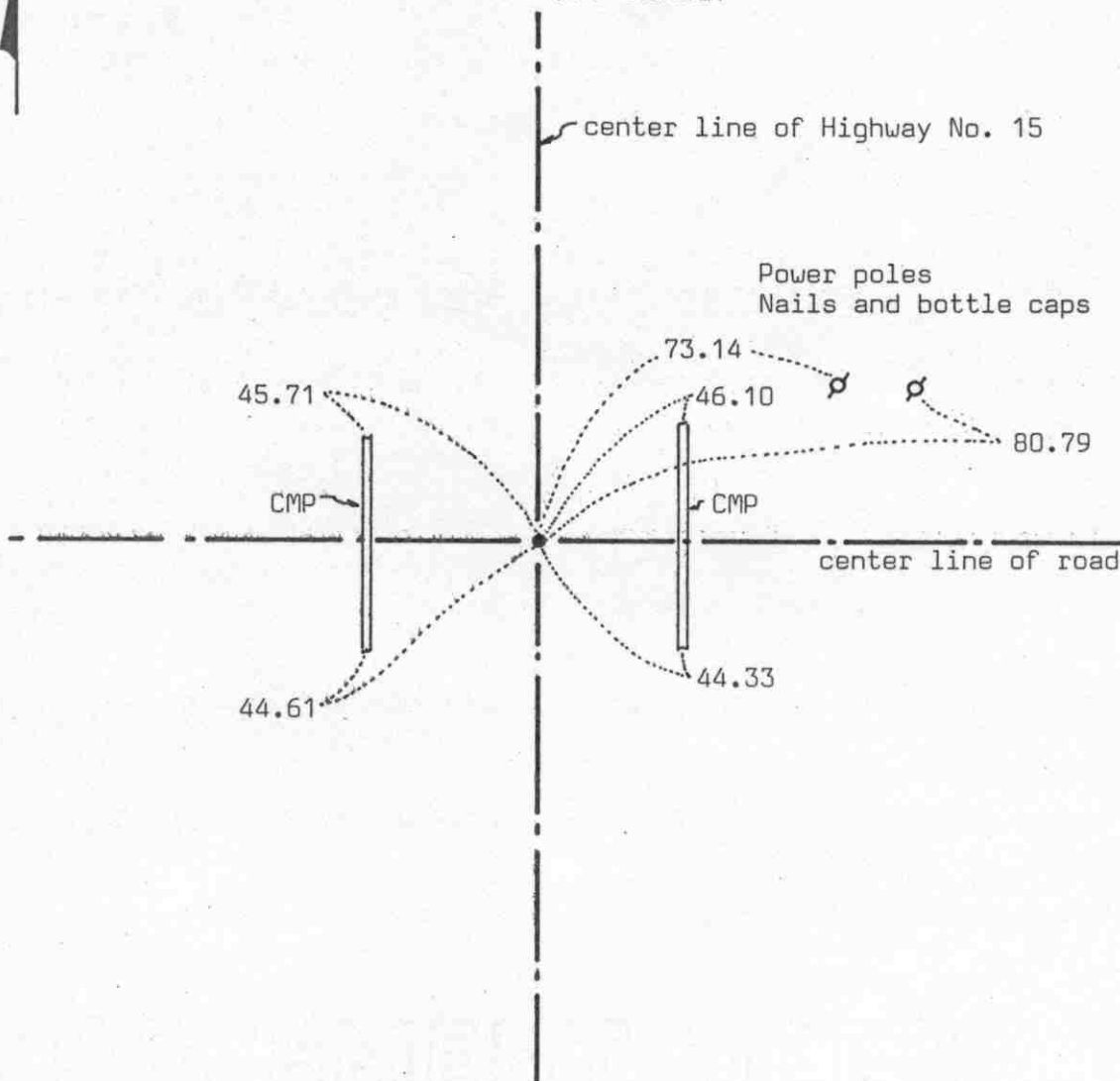
corner, Section 36, Township 114 North, Range 30 West

# Certificate of Location of Government Corner



## SKETCH OF REFERENCE TIES

(NO SCALE)



Statement of evidence relative to this corner location on sheet 2

I hereby certify that this document was prepared by me or under my direct supervision.

Willard Pellinen

Willard Pellinen  
McLeod County Surveyor  
License No. 9626

Date 4/8/89

OFFICE OF THE COUNTY RECORDER  
MCLEOD COUNTY, MINNESOTA.

I hereby certify that this document was filed in this office at 4 o'clock P.M. on the 20th day of April, 1989.

Carmen Ostlie, County Recorder

By \_\_\_\_\_, Deputy

Document No. 227818

## Certificate of Location of Government Corner

This corner was originally established by the government in 1855 and was monumented by a wood post in a mound of earth.

State Highway No. 15 right of way plans show an iron pin (on top of a 10 inch square stone) at P.I. station 326+27.3.

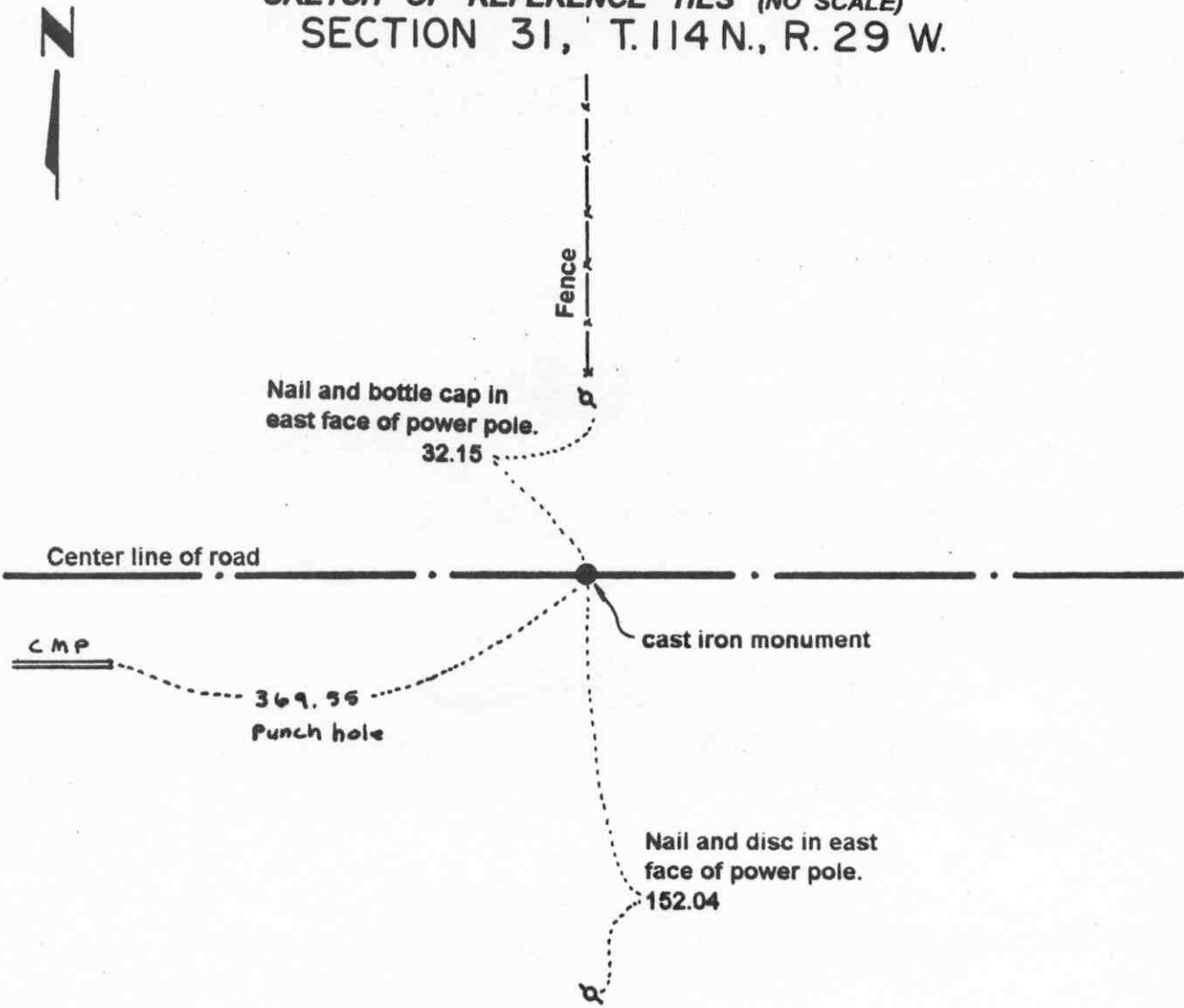
In 1969, McCombs Knutson Associates (Dickman Knutson, county surveyor) found an iron pin at P.I. 326+27.3 and replaced it with a 1 inch diameter iron pipe and took reference ties.

On January 31, 1989, we found a PK nail at the corner and the reference ties good.

# Certificate of Location of Government Corner

SOUTH QUARTER corner, Section 31, Township 114 North, Range 29 West

SKETCH OF REFERENCE TIES (NO SCALE)  
SECTION 31, T.114 N., R. 29 W.



SECTION 6, T.113 N., R. 29 W.

Statement of evidence relative to this corner location on sheet 2

I hereby certify that this document was prepared by me or under my direct supervision.

Willard Pellinen  
Willard Pellinen  
McLeod County Surveyor  
License No. 9626.

Date Aug. 7, 1995

OFFICE OF THE COUNTY RECORDER  
MCLEOD COUNTY, MINNESOTA

I hereby certify that this document was filed in this office at 9 o'clock A. M. on the 8th day of August 19 95.

CARMEN OSTLIE MILDORF, MCLEOD COUNTY RECORDER, County Recorder

By Dhyllis Sopsowiak, Deputy.

Document No. 267405

**Certificate of Location of Government Corner**  
**South Quarter Corner, Section 31, Township 114 North, Range 29 West**

**1855. John Ryan of the General Land Office originally established this corner. He set a post, deposited charcoal, dug pits and trench, built mound and planted osage orange seeds at the corners of the mound.**

**February, 1973. Dickman Knutson, county surveyor, measured the south line of Township 114, Range 29 and set temporary corners. No old survey records found for south line of Section 31.**

**July 24, 1973. Knutson excavated for this corner, John Tupa from Hutchinson with a backhoe. Down 4 1/2 feet below the surface of the gravel road they found a 10 inch diameter stone and a wood stake beside it. They left stone and wood stake in place and took reference ties.**

**September 19, 1973. Knutson set a McLeod County cast iron monument and took additional ties. This corner is in the center of the east-west road, fence to the north and power pole line to the south.**

**March 27, 1995. We checked the reference ties.**

# Certificate of Location of Government Corner

SOUTHEAST corner, Section 31, Township 114 North, Range 29 West

SKETCH OF REFERENCE TIES (NO SCALE)

T. 114 N. R. 29 W.

SECTION 31

SECTION 32



Fence

Punch hole on top of each end of CMP.

30.90

33.15

Center line of road

Cast iron monument

Field line

SECTION 6

SECTION 5

T. 113 N. R. 29 W.

Statement of evidence relative to this corner location on sheet 2

I hereby certify that this document was prepared by me or under my direct supervision.

Willard Pellinen  
Willard Pellinen  
McLeod County Surveyor  
License No. 9626.

Date Nov. 6, 1995

OFFICE OF THE COUNTY RECORDER  
MCLEOD COUNTY, MINNESOTA

269314

I hereby certify that this document was filed in this office at 9 o'clock A. M. on the 14th day of November 19 95.

Carmen Ostlie Mulder County Recorder

By \_\_\_\_\_, Deputy.

Document No. \_\_\_\_\_



**Certificate of Location of Government Corner**  
**Southeast Corner, Section 31, Township 114 North, Range 29 West**

*1855. John Ryan of the General Land Office originally established this corner. He set a post, deposited charcoal, dug pits and trench, built mound and planted osage orange seeds at the corners of the mound.*

*February 20, 1973. Mr. Gordon Stenzel, 51 years old and owns Southwest Quarter of Section 32 said steel "marker" was found at the corner when road was regraded 16 year ago. He said fence to the south is on section line.*

*July 24, 1973. Dickman Knutson, county surveyor, excavated for the corner. (John Tupa from Hutchinson with a backhoe) They found a 1 inch diameter iron pipe down 2 feet below the road surface. They took available reference ties.*

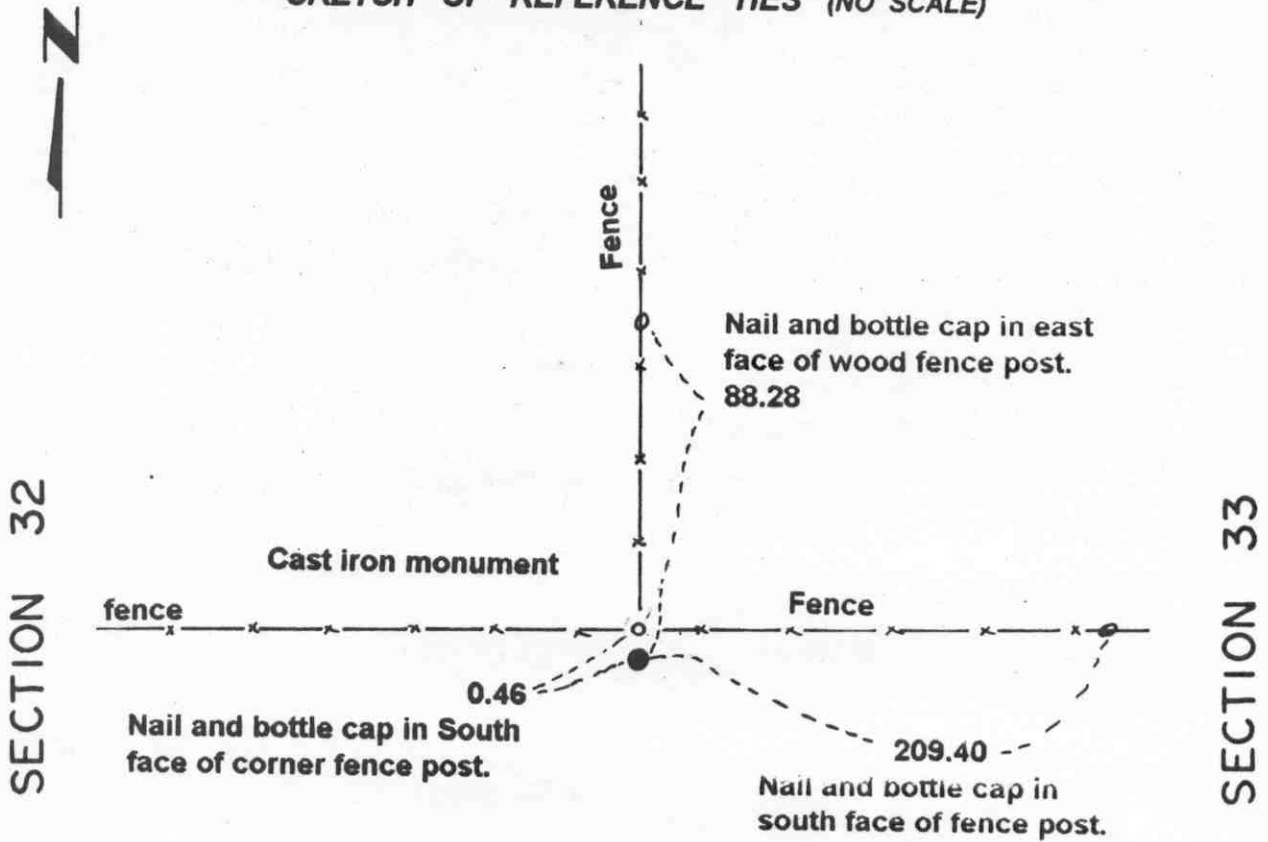
*September 19, 1973. Knutson set a McLeod County cast iron monument at the corner and took additional ties. The monument was set over the found iron pipe.*

*April 28, 1995. We checked the reference ties.*

# Certificate of Location of Government Corner

EAST QUARTER corner, Section 32, Township 114 North, Range 29 West

## SKETCH OF REFERENCE TIES (NO SCALE)



**Statement of evidence relative to this corner location on sheet 2**

I hereby certify that this document was prepared by me or under my direct supervision.

Willard Pellinen  
 Willard Pellinen  
 McLeod County Surveyor  
 License No. 9626.

Date July 5, 1995

**OFFICE OF THE COUNTY RECORDER  
 MCLEOD COUNTY, MINNESOTA**

I hereby certify that this document was filed in this office at 9 o'clock A. M. on the 18th day of July 19 95.

Carmen D. Liebig-Gulder, County Recorder

By \_\_\_\_\_, Deputy.

Document No. 266988

**Certificate of Location of Government Corner**  
**East Quarter Corner, Section 32, Township 114 North, Range 29 West**

*July 1855. A. H. Runyon of the General Land Office originally established this corner. He set a post, drove a charred stake, raised mound of earth with trench and pits and planted maclura seeds at the corners of the mound.*

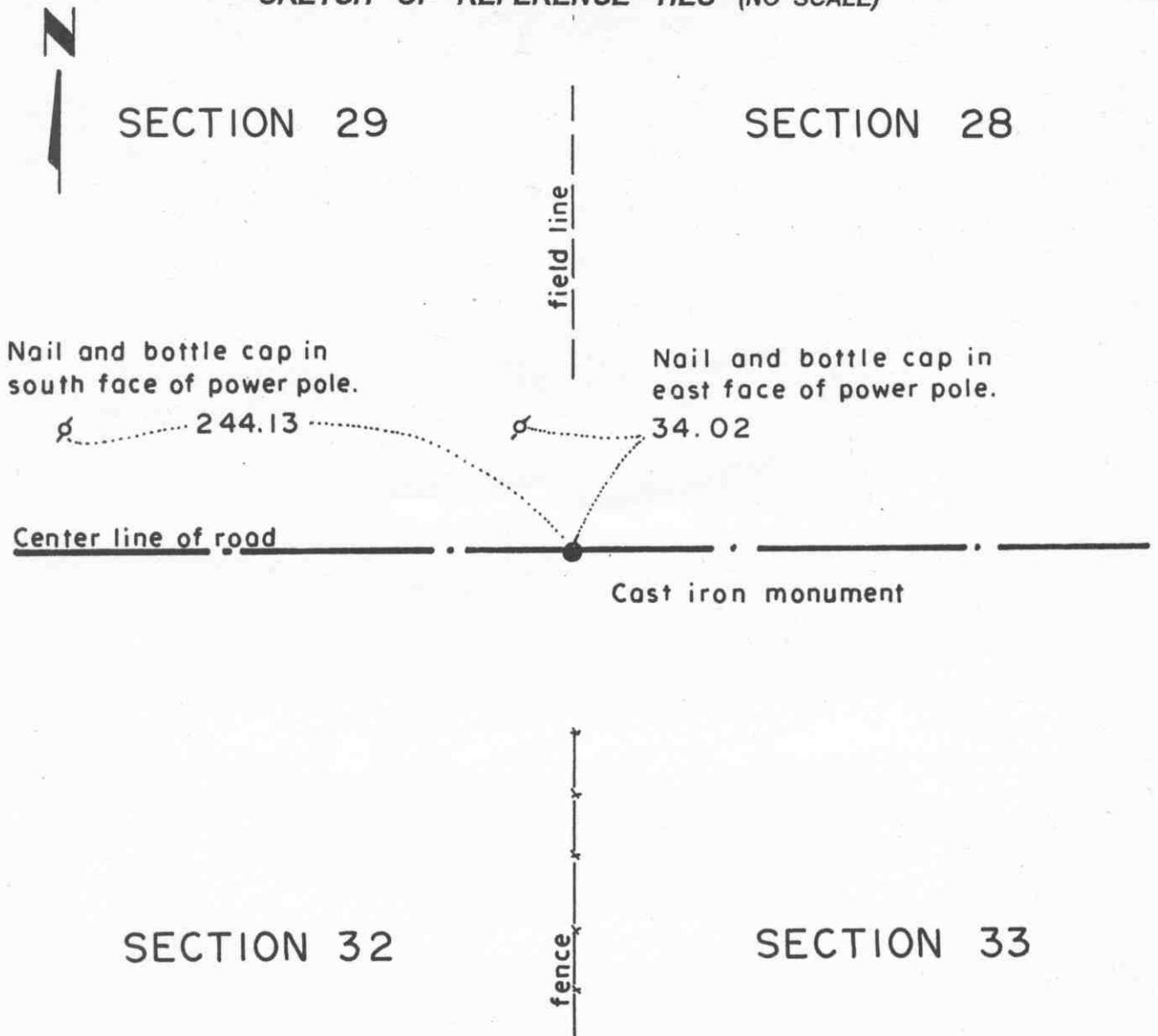
*January 17, 1983. Lyle Rettmann, in the Northeast Quarter of Section 32 since 1971 said the fences (north, east and West) have been accepted by adjacent land owners as section and quarter section lines. Mr Rettmann has replaced some posts towards the north end of the fence but otherwise these are very old fences.*

*June 6, 1983. We set a McLeod County cast iron monument at the fence intersection and took available reference ties.*

# Certificate of Location of Government Corner

NORTHEAST corner, Section 32, Township 114 North, Range 29 West

SKETCH OF REFERENCE TIES (NO SCALE)



**Statement of evidence relative to this corner location on sheet 2**

I hereby certify that this document was prepared by me or under my direct supervision.

Willard Pellinen  
 Willard Pellinen  
 McLeod County Surveyor  
 License No. 9626.

Date Aug. 7, 1995

**OFFICE OF THE COUNTY RECORDER  
 MCLEOD COUNTY, MINNESOTA**

I hereby certify that this document was filed in this office at 9 o'clock A. M. on the 8th day of August 19 95.

GARMEN ORTLE MILDRE, MCLEOD COUNTY RECORDER, County Recorder

By Phyllis Sopkowiak, Deputy.

Document No. 267406

**Certificate of Location of Government Corner**  
**Northeast Corner, Section 32, Township 114 North, Range 29 West**

*July 1855. A. H. Runyon of the General Land Office originally established this corner. He set a post, drove a charred stake, raised mound of earth with trench and pits and planted maclura seeds at the corners of the mound.*

*July 1978. Dickman Knutson, county surveyor, excavated for the corner in the center line of the east-west road in line with a fence to the south and a field line to the north. (John Tupa from Hutchinson with a backhoe) This location has been accepted by adjacent land owners as being the section corner. They dug a hole 5 feet wide, 12 feet long and 6 feet deep but found no evidence of the government corner.*

*April 1, 1983. We set a McLeod County cast iron monument in the center line of the road in line with the fence and field line, and took available reference ties.*

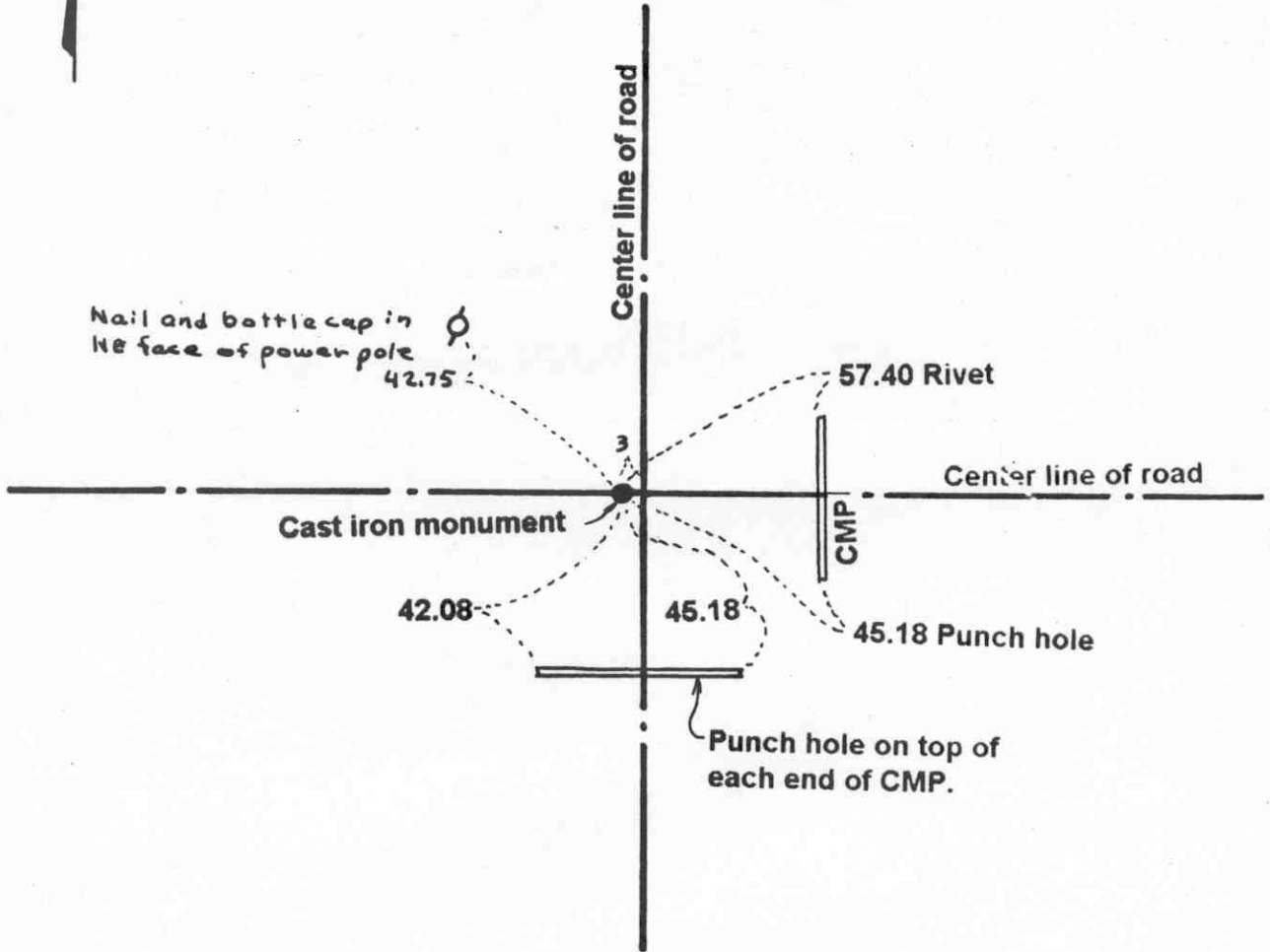
*February 27, 1995. We checked the reference ties.*

# Certificate of Location of Government Corner

NORTH QUARTER corner, Section 32, Township 114 North, Range 29 West

SKETCH OF REFERENCE TIES (NO SCALE)

SECTION 29



SECTION 32

Statement of evidence relative to this corner location on sheet 2

I hereby certify that this document was prepared by me or under my direct supervision.

Willard Pellinen  
Willard Pellinen  
McLeod County Surveyor  
License No. 9626.

Date Nov. 6, 1995

OFFICE OF THE COUNTY RECORDER  
MCLEOD COUNTY, MINNESOTA **269315**

I hereby certify that this document was filed in this office at 9 o'clock A. M. on the 14th day of November 19 95.

Carmen Ostlie Mulder, County Recorder

By \_\_\_\_\_, Deputy.

Document No. \_\_\_\_\_

**Certificate of Location of Government Corner**  
**North Quarter Corner, Section 32, Township 114 North, Range 29 West**

*July 1855. A. H. Runyon of the General Land Office originally established this corner. He set a post, drove a charred stake, raised mound of earth with trench and pits and planted maclura seeds at the corners of the mound.*

*The center line intersection of the roads has been accepted as being the quarter corner.*

*July 7, 1978. Dickman Knutson, county surveyor, excavated for the corner at the center line intersection of the roads. (John Tupa from Hutchinson with a backhoe) Down 1 foot below the surface of the road they found a 1 inch diameter, 3 foot long iron pin. They took reference ties and dug a hole 12 feet by 8 feet by 5 feet deep but found no other evidence of the government corner.*

*September 22, 1978. Knutson set a spike at the corner and took additional ties.*

*July 22, 1980. We set a McLeod County cast iron monument at the corner.*

*April 28, 1995. We checked the reference ties.*

# Certificate of Location of Government Corner

SOUTH QUARTER corner, Section 32, Township 114 North, Range 29 West

SKETCH OF REFERENCE TIES (NO SCALE)

SECTION 32 T. 114 N. R. 29 W



Nail and disc in south  
face of power pole.

76.30

Rivet on top of  
each end of CMP

51.50

30.75

center line of road

cast iron monument

center line of road

SECTION 5 T. 113 N. R. 29 W.

Statement of evidence relative to this corner location on sheet 2

I hereby certify that this document  
was prepared by me or under my  
direct supervision.

Willard Pellinen  
Willard Pellinen  
McLeod County Surveyor  
License No. 9626.

Date Aug. 7, 1995

OFFICE OF THE COUNTY RECORDER  
MCLEOD COUNTY, MINNESOTA

I hereby certify that this document was filed in this office at 9  
o'clock A.M. on the 8th day of August  
19 95.

CARMEN OSTLIE MILDRE, MCLEOD COUNTY RECORDER

County Recorder

By Dhyllis Sopkowiak, Deputy.

Document No. 267408



**Certificate of Location of Government Corner**  
**South Quarter Corner, Section 32, Township 114 North, Range 29 West**

*1855. John Ryan of the General Land Office originally established this corner. He set a post, deposited charcoal, dug pits and trench, built mound and planted osage orange seeds at the corners of the mound.*

*February 12, 1973. Gordon Stenzel, 51 years old and had lived in the Southeast Quarter of Section for 25 years, said a steel "marker" was found at the corner when road was regraded 16 years ago.*

*July 24, 1973. Dickman Knutson, county surveyor, excavated for the corner. (John Tupa from Hutchinson with a backhoe) Down 2 feet below the surface of the gravel road they found a 1 inch diameter iron pin, wood stake and stone beside the iron pin. They took available reference ties and left found monuments in place.*

*September 19, 1973. Knutson set a McLeod County cast iron monument and took additional ties.*

*March 27, 1995. We checked the reference ties.*

# Certificate of Location of Government Corner

SOUTHEAST corner, Section 32, Township 114 North, Range 29 West

SKETCH OF REFERENCE TIES (NO SCALE)

T. 114 N. R. 29 W.

SECTION 32

SECTION 33



Nail and disc in south face of power pole.

111.70

cast iron monument

Center line of road

33.85

48.40

Punch hole on top of each end of CMP

SECTION 5

SECTION 4

T. 113 N.

R. 29 W.

Statement of evidence relative to this corner location on sheet 2

I hereby certify that this document was prepared by me or under my direct supervision.

Willard Pellinen  
Willard Pellinen  
McLeod County Surveyor  
License No. 9626.

Date Aug. 7, 1995

OFFICE OF THE COUNTY RECORDER  
MCLEOD COUNTY, MINNESOTA

I hereby certify that this document was filed in this office at 9 o'clock A.M. on the 8th day of August 19 95.

CARMEN OSTLIE BAUDFR, MCLEOD COUNTY RECORDER, County Recorder

By Dhyllis Sopkowiak, Deputy.

Document No. 267407

**Certificate of Location of Government Corner**  
**Southeast Corner, Section 32, Township 114 North, Range 29 West**

**1855. John Ryan of the General Land Office originally established this corner. He set a post, deposited charcoal, dug pits and trench, built mound and planted osage orange seeds at the corners of the mound.**

**February 12, 1973. Willmer Gehrke, 47 years old and had lived in the Northwest Quarter of Section 4 for 22 years, said the center line of ditch running south is on section line.**

**February 21, 1973. Allen Opitz, 33 years old and had lived in the Southwest Quarter of Section 33 all his life, said a 1 foot diameter round stone was found at the corner in 1958 when road was rebuilt. He said it was in the center of the road in line with the ditch running south.**

**July 24, 1973. Dickman Knutson, county surveyor, excavated for the corner. (John Tupa from Hutchinson with a backhoe) Down 2 1/2 feet below the surface of the gravel road they found a wood stake. They took reference ties and dug a hole 8 feet by 15 feet by 4 1/2 feet deep but found no other evidence of the government corner. The stake was in the center of the east-west road in line with the center line of the ditch running south.**

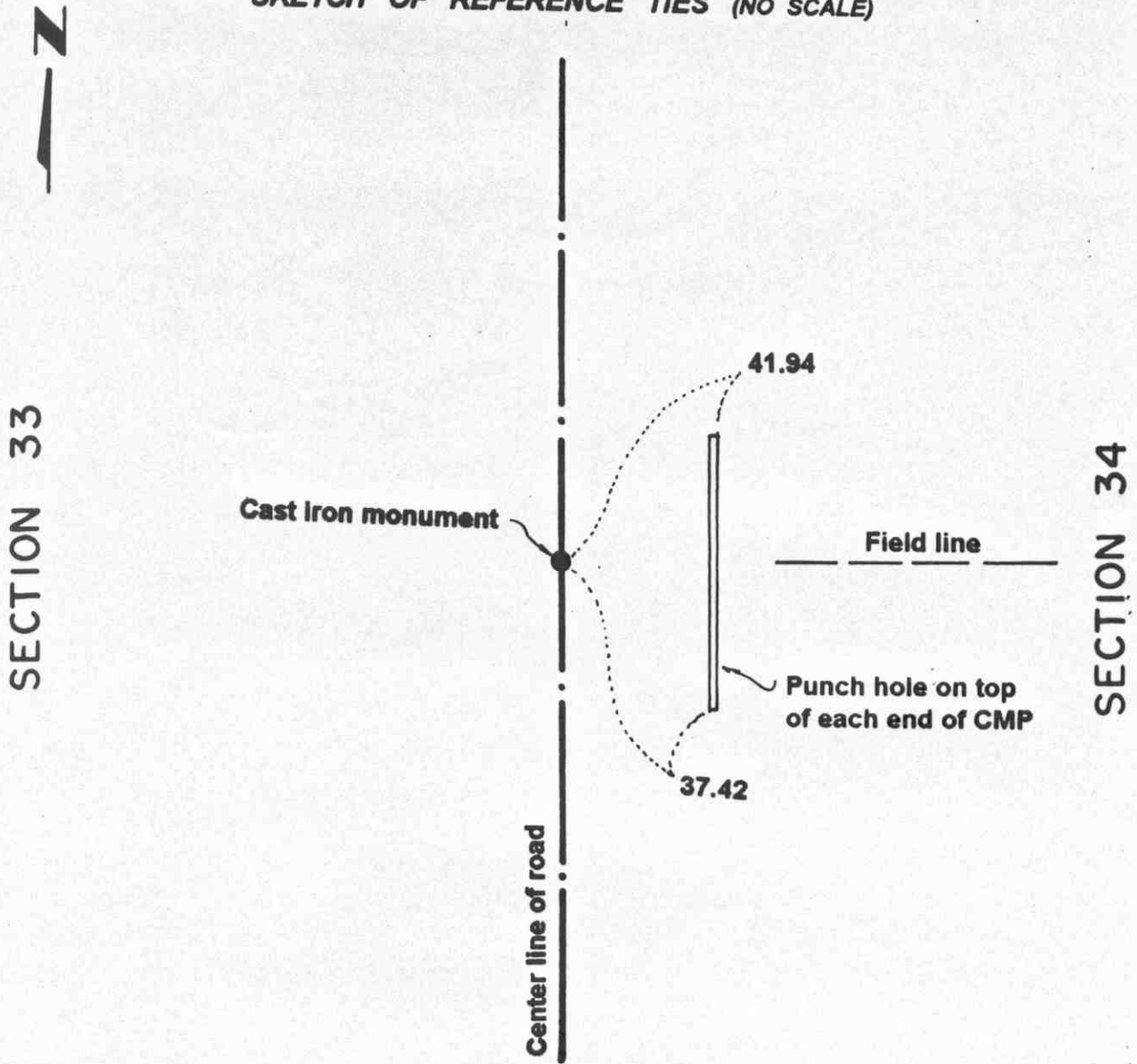
**September 19, 1973. Knutson set a McLeod County cast iron monument and took additional ties.**

**March 27, 1995. We checked the reference ties.**

# Certificate of Location of Government Corner

EAST QUARTER corner, Section 33, Township 114 North, Range 29 West

SKETCH OF REFERENCE TIES (NO SCALE)



Statement of evidence relative to this corner location on sheet 2

I hereby certify that this document was prepared by me or under my direct supervision.

Willard Pellinen  
Willard Pellinen  
McLeod County Surveyor  
License No. 9626.

Date Nov. 6, 1995

OFFICE OF THE COUNTY RECORDER **269316**  
MCLEOD COUNTY, MINNESOTA

I hereby certify that this document was filed in this office at 9 o'clock A. M. on the 14th day of November 19 95.

Carmen Ostlie Mulder, County Recorder

By \_\_\_\_\_, Deputy.

Document No. \_\_\_\_\_

## **Certificate of Location of Government Corner**

**East Quarter Corner, Section 33, Township 114 North, Range 29 West**

*July 1855. A. H. Runyon of the General Land Office originally established this corner. He set a post, drove a charred stake, raised mound of earth with trench and pits and planted maclura seeds at the corners of the mound.*

*Adjacent land owners agree the center line of the north-south road, fence to the west, field line to the east is the location of the quarter corner.*

*March 21, 1978. Dickman Knutson, county surveyor, dug for the corner and found a spike with a bottle cap at this location. He took available reference ties. Found no other evidence of the government corner. This spike was probably set by the county highway department. This was within a foot of being on a split between the section corners.*

*November 8, 1984. We replaced the spike with a McLeod County cast iron monument.*

*April 28, 1995. We checked the reference ties.*

# CERTIFICATE OF LOCATION OF GOVERNMENT CORNER

NORTHEAST Corner of Section 33, Township 114 N, Range 29 W, 5 th. P.M.

STATE OF MINNESOTA, County of McLEOD

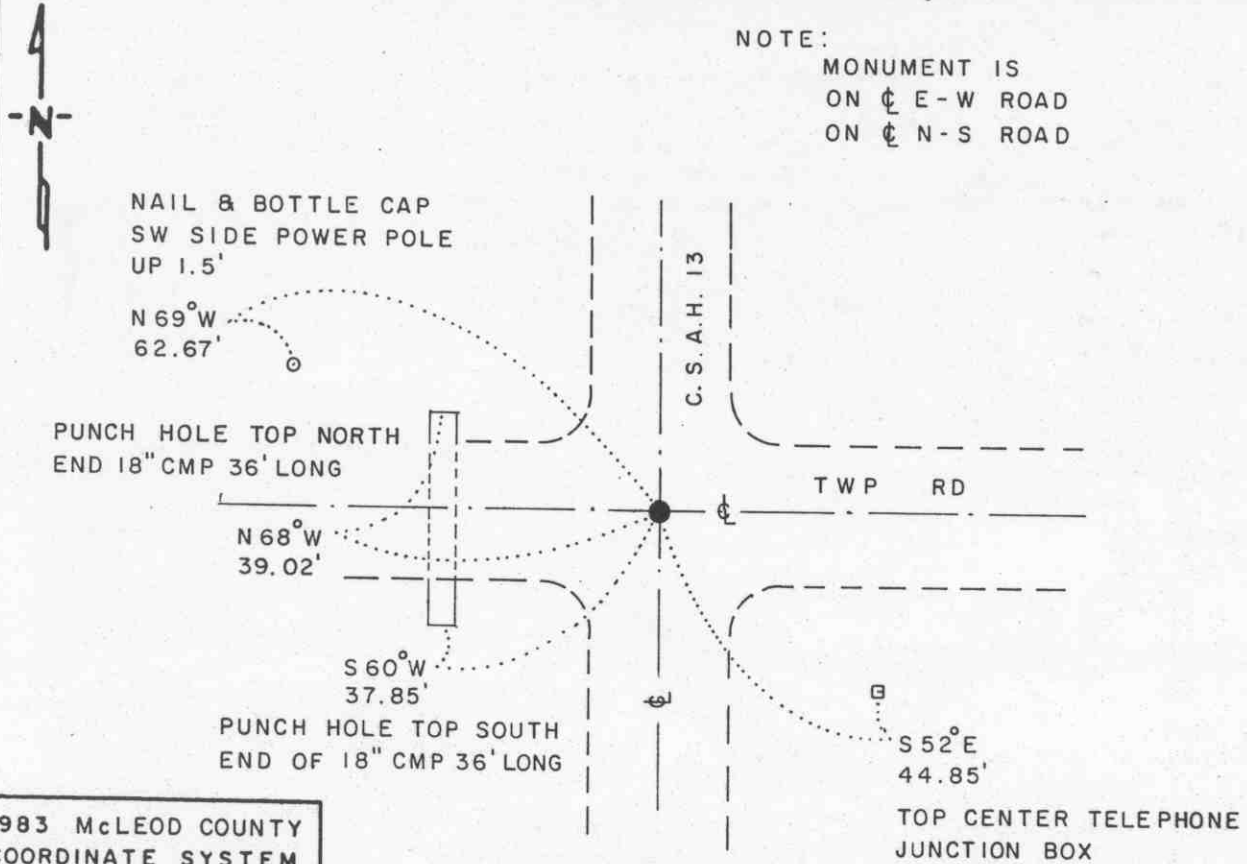
At the corner location shown on the sketch

On 7-10-90 found a CAST IRON MONUMENT

left monument as found,  lowered monument,  removed monument (explain)

On \_\_\_\_\_ placed a \_\_\_\_\_

## SKETCH OF REFERENCE TIES



NOTE:  
MONUMENT IS  
ON  $\phi$  E-W ROAD  
ON  $\phi$  N-S ROAD

1983 McLEOD COUNTY  
COORDINATE SYSTEM  
N = 168,994.907  
E = 582,702.225

BEARINGS OBSERVED WITH COMPASS

Statement of evidence relative to this corner location is on back of page

J.B.M. 8-28-90  
WMA. 732.00.00.01

I hereby certify that this document and the data contained herein was prepared by me or under my direct supervision.

Louell R. Romerding 9-10-90  
SIGNATURE DATE

Registration No. 17005

- Land Surveyor,  Professional Engineer
- County Surveyor,  County Engineer

OFFICE OF THE COUNTY RECORDER  
County of McLeod

I hereby certify that this document was filed in the Co. Recorders office at 9 A. M. on the 17th day of Sep. A.D., 1990

County Recorder Carmen Potlie

By \_\_\_\_\_, Deputy

DOCUMENT NO. 235353

Northeast Corner Section 33, Township 114 North, Range 29 West

The DNR Bureau of Engineering contacted the following offices for information on this corner:

MN Secretary of State  
McLeod County Recorder  
McLeod County Highway Engineer  
Willard Pellinen, McLeod County Surveyor  
Rieke, Carroll, Muller at Gaylord

- 1855 U.S. General Land Office notes in the Secretary of State's Office show the corner marked with a post, drove charred stake, raised mound of earth with trench and pits as per instructions. Planted maclura seeds southeast.
- 1957 Deed Record Book #107, on pages 473 and 475, on file in the County Recorder's Office mentions a certified plat of the southeast quarter of the southeast quarter of Section 28. This plat was made by Stanley Benson, Sibley County Surveyor. No record of this plat was found.
- 1967 September, the DNR Bureau of Engineering went to this corner and located the intersection of roads north-south and east-west. This intersection was found to measure:  
2640.38 ft. from the east quarter corner Section 28  
5315.23 ft. from the northeast corner Section 28
- 1978 Copies of survey field notes obtained from Willard Pellinen, County Surveyor, state this corner was a found iron stake at the intersection of roads.
- 1984 A subdivision sheet of Section 27, date November 6, obtained from Willard Pellinen, County Surveyor, shows this corner measures:  
2641.25 ft. from the east quarter corner Section 28  
2639.37 ft. from the south quarter corner Section 27
- 1986 A Certificate of Location of Government Corner, signed by Willard Pellinen, RLS #9626, shows this corner as a cast iron monument. See this certificate for details of how its position was arrived at and reference ties.
- 1990 July 10, the DNR Bureau of Engineering conducted a search for this corner and found a cast iron monument. Searched for and found record ties as shown. Monument was found to be:  
at intersection of roads north-south and east-west  
2641.22 ft. from the east quarter corner Section 28  
2641.91 ft. from the north quarter corner Section 33

Analysis of the available information led the DNR Bureau of Engineering to conclude that the found cast iron monument marks the location of the corner.

# Certificate of Location of Government Corner

NORTH QUARTER corner, Section 33, Township 114 North, Range 29 West

SKETCH OF REFERENCE TIES (NO SCALE)



SECTION 28

Nail and bottle cap in  
NE face of power pole. 49.99

U. S. G. S. monument.  
Brass disc in concrete.  
176.12

Center line of road

Cast iron monument.

Nail and bottle cap in  
west face of fence post. 29.87

Fence

SECTION 33

Statement of evidence relative to this corner location on sheet 2

I hereby certify that this document was prepared by me or under my direct supervision.

Willard Pellinen  
Willard Pellinen  
McLeod County Surveyor  
License No. 9626.

Date Aug. 7, 1995

OFFICE OF THE COUNTY RECORDER  
MCLEOD COUNTY, MINNESOTA

I hereby certify that this document was filed in this office at 9 o'clock A. M. on the 8th day of August 19 95.

CARMEN OSTLIE BAUDFR, MCLEOD COUNTY RECORDER, County Recorder

By Thyllis Sopkowiak, Deputy.

Document No. 267409



## **Certificate of Location of Government Corner**

**North Quarter Corner, Section 33, Township 114 North, Range 29 West**

*July 1855. A. H. Runyon of the General Land Office originally established this corner. He set a post, drove a charred stake, raised mound of earth with trench and pits and planted maclura seeds at the corners of the mound.*

*Adjacent land owners have accepted the intersection of the center line of the east-west road with the northerly prolongation of the fence to the south as the location of the quarter corner.*

*March 21, 1978. Dickman Knutson, county surveyor, set a temporary quarter corner at this location.*

*July 7, 1978. Knutson excavated for the corner. (John Tupa from Hutchinson with a backhoe) They found a rotted wood stake down 4 feet below the surface of the gravel road. (possible original government corner) They took available reference ties. This was in the center line of the road in line with the fence to the south.*

*September 28, 1978. Knutson set a spike at the corner and took additional ties. This corner is within 2 feet of being on a split between the section corners.*

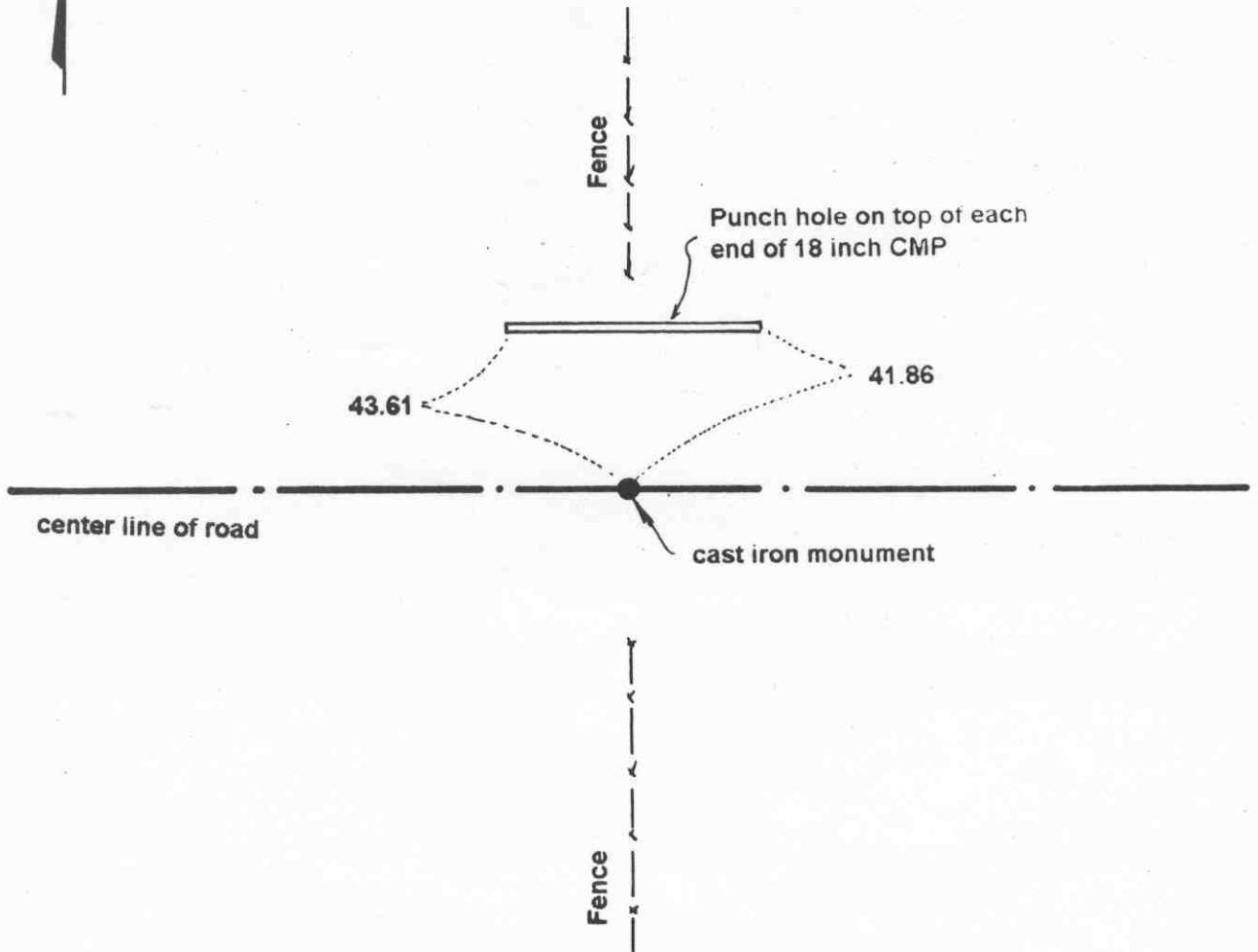
*February 27, 1995. We found the monument in good condition down 8 inches below the surface of the gravel road and took new available reference ties.*

# Certificate of Location of Government Corner

SOUTH QUARTER corner, Section 33, Township 114 North, Range 29 West

SKETCH OF REFERENCE TIES (NO SCALE)

SECTION 33 T. 114 N. R. 29 W.



SECTION 4 T. 113 N. R. 29 W

Statement of evidence relative to this corner location on sheet 2

I hereby certify that this document was prepared by me or under my direct supervision.

Willard Pellinen

Willard Pellinen  
McLeod County Surveyor  
License No. 9626.

Date June 9, 1995

OFFICE OF THE COUNTY RECORDER  
MCLEOD COUNTY, MINNESOTA

I hereby certify that this document was filed in this office at 2 o'clock P.M. on the 13th day of June 19 95.

CARMEN OSTLIE BUILDFR, McLEOD COUNTY RECORDER

County Recorder

By Phyllis Sopkowiak, Deputy.

Document No. 266248

**Certificate of Location of Government Corner**  
**South Quarter Corner, Section 33, Township 114 North, Range 29 West**

*1855. John Ryan of the General Land Office originally established this corner. He set a post, deposited charcoal, dug pits and trench, built mound and planted osage orange seeds at the corners of the mound.*

*February 21, 1973. Allen Opitz who lives in the Southwest Quarter of Section 33, said fence running north has been accepted by adjacent land owners as being on the quarter line.*

*March 19, 1973. Jerald Wendlandt, 39 years old and had lived in the Southeast Quarter of Section 33 all his life, said 6 years ago RCM found an iron monument at the corner. Dickman Knutson, county surveyor, dug for the corner and found a 1 1/2 inch diameter iron pipe down 1 foot below the road surface. This was in the center of the east-west road in line with a fence to the north.*

*September 19, 1973. Knutson took reference ties to the iron pipe and replaced it with a McLeod County cast iron monument.*

*March 27, 1995. We found the monument in good condition down 6 inches below the surface of the gravel road and took new reference ties.*

# Certificate of Location of Government Corner

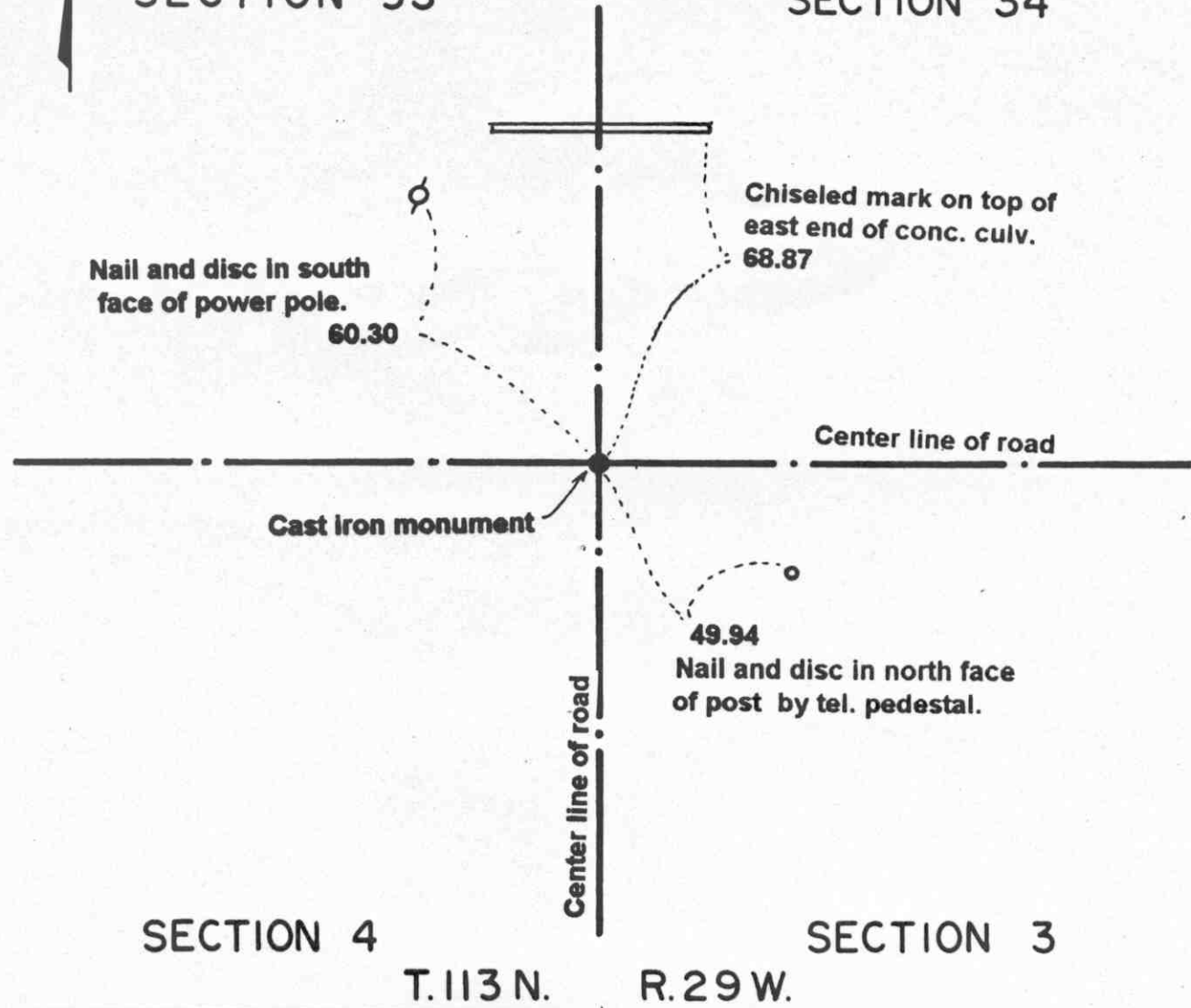
SOUTHEAST corner, Section 33, Township 114 North, Range 29 West

SKETCH OF REFERENCE TIES (NO SCALE)

T. 114 N. R. 29 W.

SECTION 33

SECTION 34



SECTION 4

SECTION 3

T. 113 N. R. 29 W.

Statement of evidence relative to this corner location on sheet 2

I hereby certify that this document was prepared by me or under my direct supervision.

Willard Pellinen  
Willard Pellinen  
McLeod County Surveyor  
License No. 9626.

Date Nov. 6, 1995

OFFICE OF THE COUNTY RECORDER **269317**  
MCLEOD COUNTY, MINNESOTA

I hereby certify that this document was filed in this office at 9 o'clock A. M. on the 14th day of November 19 95.

Carmen Dotlie Mulder, County Recorder

By \_\_\_\_\_, Deputy.

Document No. \_\_\_\_\_

**Certificate of Location of Government Corner**  
**Southeast Corner, Section 33, Township 114 North, Range 29 West**

*1855. John Ryan of the General Land Office originally established this corner. He set a post, deposited charcoal, dug pits and trench, built mound and planted osage orange seeds at the corners of the mound.*

*February 12, 1973. Jerald Wendlandt, 39 years old and had lived in the Southeast Quarter of Section 33 all his life, said about 6 years ago R.C.M. did a survey for him and found an iron monument at the corner. It was on the center line intersection of the roads.*

*March 19, 1973. We found the iron pin down 1 foot below the surface of the gravel road.*

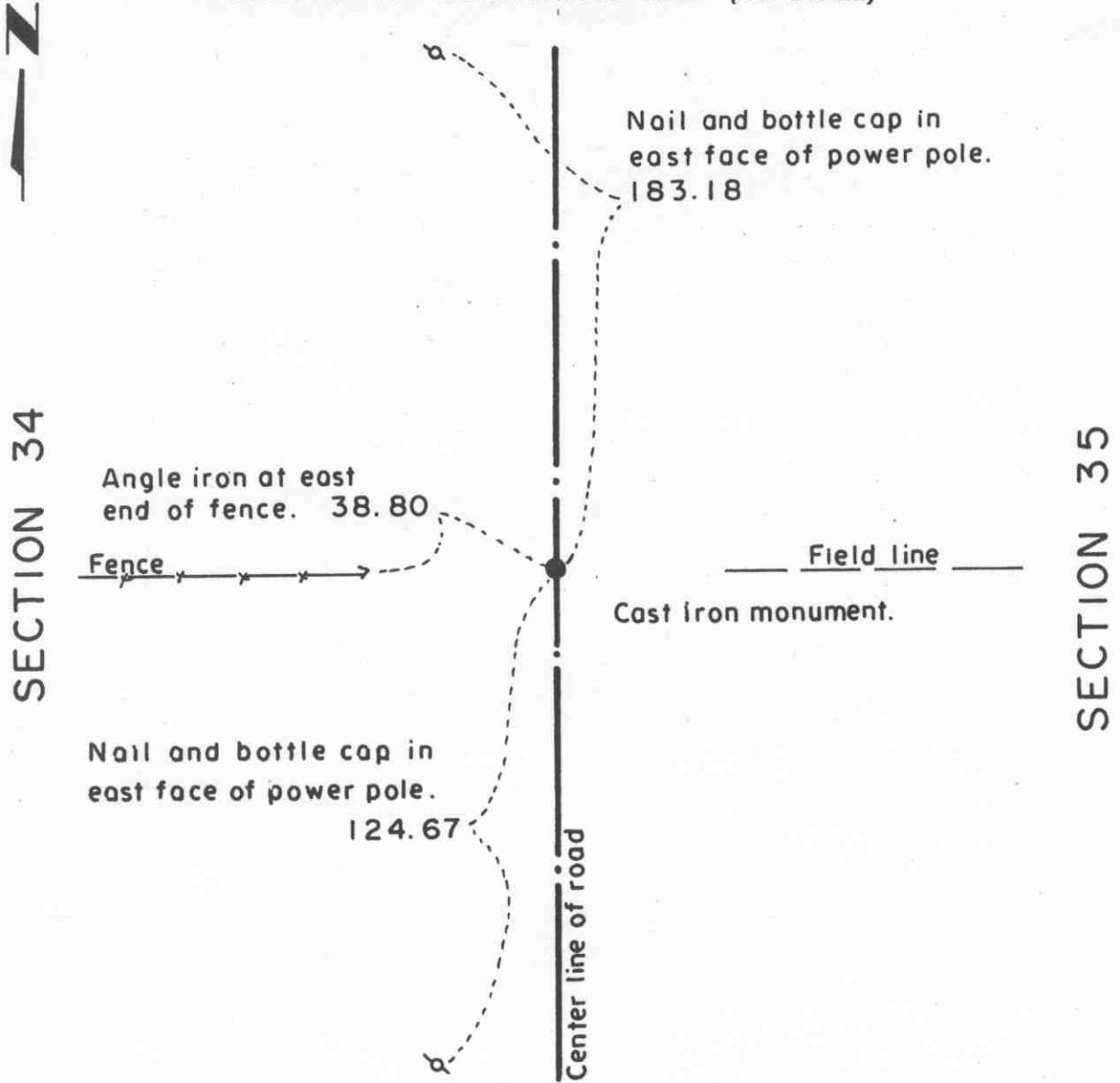
*August 13, 1973. We replaced the iron pin with a McLeod County cast iron monument and took available reference ties.*

*April 28, 1995. We checked the reference ties.*

# Certificate of Location of Government Corner

EAST QUARTER corner, Section 34, Township 114 North, Range 29 West

## SKETCH OF REFERENCE TIES (NO SCALE)



### Statement of evidence relative to this corner location on sheet 2

I hereby certify that this document was prepared by me or under my direct supervision.

Willard Pellinen  
Willard Pellinen  
McLeod County Surveyor  
License No. 9626.

Date Aug. 7, 1995

### OFFICE OF THE COUNTY RECORDER MCLEOD COUNTY, MINNESOTA

I hereby certify that this document was filed in this office at 9 o'clock A. M. on the 8th day of August 19 95.

CARMEN ORTUE MALDEF, MCLEOD COUNTY RECORDER, County Recorder

By Phyllis Sopkowiak, Deputy.

Document No. 267410

## **Certificate of Location of Government Corner**

**East Quarter Corner, Section 34, Township 114 North, Range 29 West**

*July 1855. A. H. Runyon of the General Land Office originally established this corner. He set a post, drove a charred stake, raised mound of earth with trench and pits and planted maclura seeds at the southeast corner of the mound.*

*July, 1978. Adjacent land owners said the corner should be in the center line of the road, in line with field lines east and west.*

*July 7, 1978. Dickman Knutson, county surveyor, excavated for the corner, John Tupa from Hutchinson with a backhoe. They found a small rotted wood stake down below the road bed in the original ground. They took available reference ties. This was in the center of the north-south road in line with field divisions east and west. This was within a few tenths of a foot of being half way between the section corners.*

*January 25, 1980. We set a spike at the corner and checked the reference ties.*

*July 22, 1980. We set a McLeod County cast iron monument at the corner.*

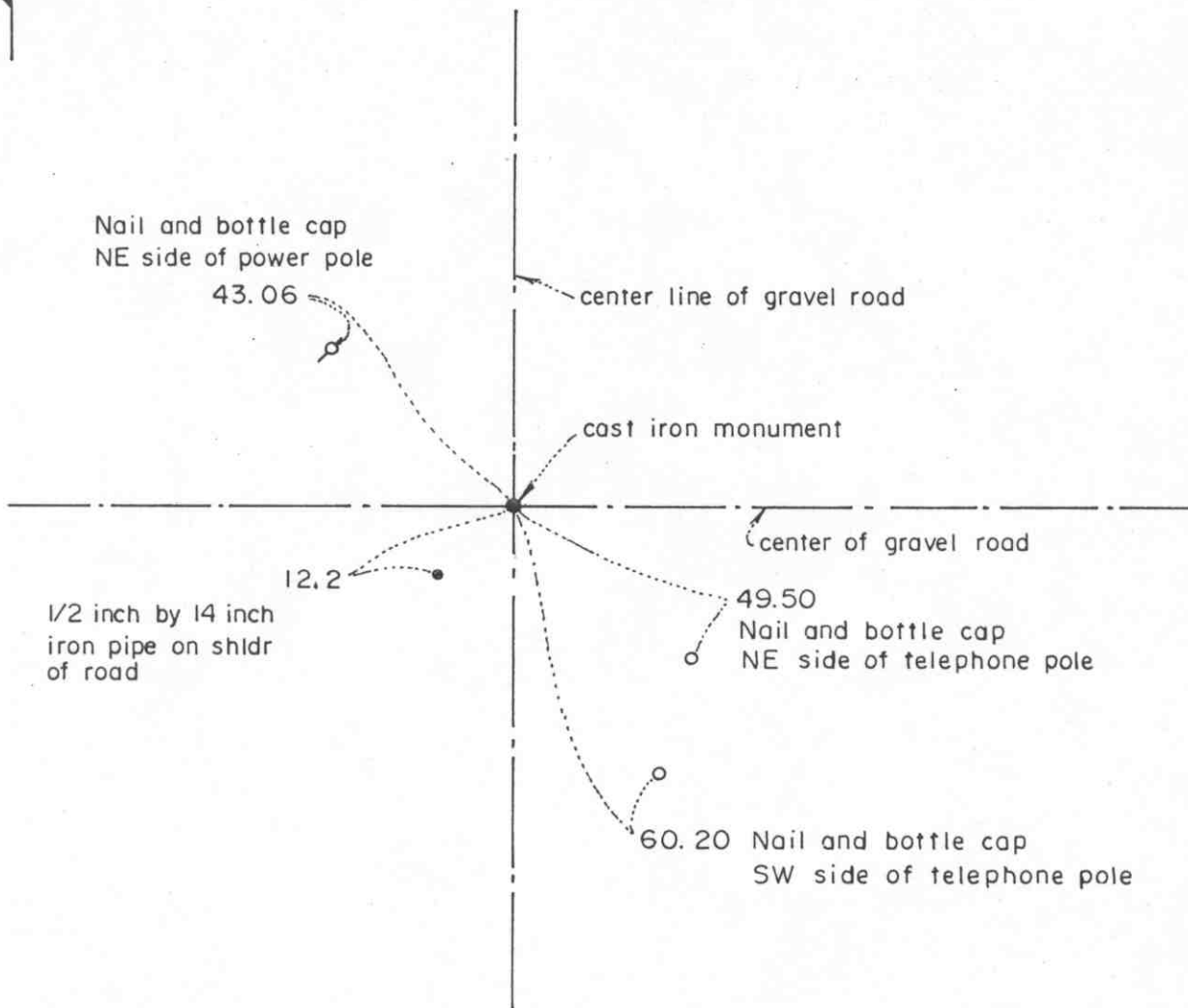
*February 27, 1995. We found the monument in good condition down 8 inches below the surface of the gravel road and took new available reference ties.*

# Certificate of Location of Government Corner



## SKETCH OF REFERENCE TIES

(NO SCALE)



Statement of evidence relative to this corner location on sheet 2

I hereby certify that this document was prepared by me or under my direct supervision.

Willard Pellinen

Willard Pellinen  
McLeod County Surveyor  
License No. 9626

Date January 3, 1987

OFFICE OF THE COUNTY RECORDER  
MCLEOD COUNTY, MINNESOTA.

I hereby certify that this document was filed in this office at 8 o'clock A. M. on the 18th day of October, 1988.

Carmen Ostlie, County Recorder

By \_\_\_\_\_, Deputy

Document No. 225043



## Certificate of Location of Government Corner

This corner was established by the government in 1855 and was monumented by a wood post in a mound of earth.

1942 field notes by the County Highway Engineer show they set an iron pin at the corner. Notes don't state whether they found anything.

On July 7, 1978, we dug for this corner. John Tupa from Hutchinson with a backhoe. At  $1\frac{1}{2}$  feet below the road surface we found a 1 inch diameter iron pin, which we tied off. We dug a hole 10 feet by 10 feet and 4 feet deep but found nothing else.

Adjoining property owners don't know of any corner in place but have accepted the center line-center line intersection as the correct corner.

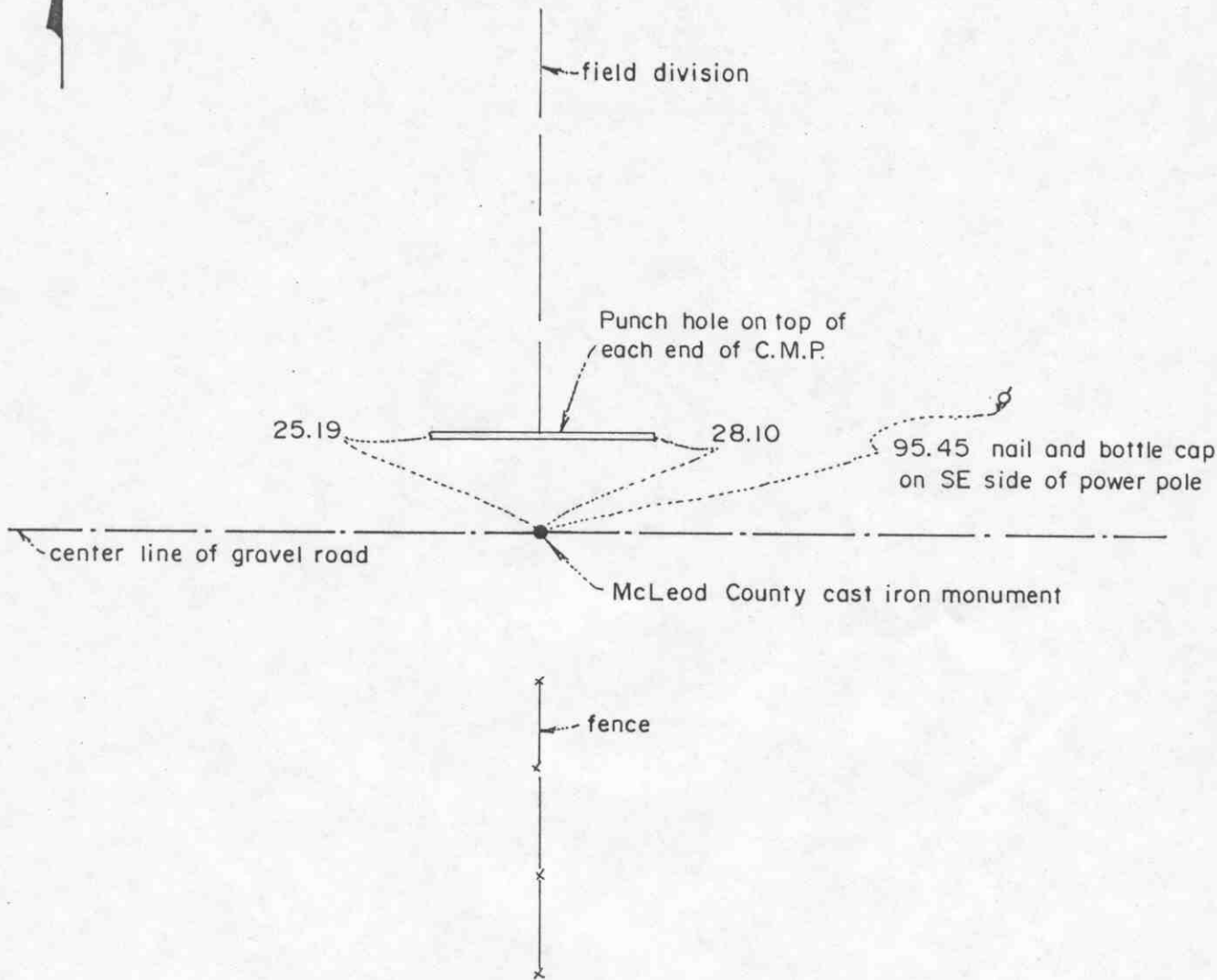
We accepted the location of the found iron pin at the center line intersection as the true corner by obliterated methods.

On July 27, 1980, we set a McLeod County cast iron monument at the location of the iron pin and took additional ties.

# Certificate of Location of Government Corner



SKETCH OF REFERENCE TIES  
(NO SCALE)



Statement of evidence relative to this corner location on sheet 2

I hereby certify that this document was prepared by me or under my direct supervision.

Willard Pellinen  
Willard Pellinen  
McLeod County Surveyor  
License No. 9626

Date December 29, 1986

OFFICE OF THE COUNTY RECORDER  
MCLEOD COUNTY, MINNESOTA.

I hereby certify that this document was filed in this office at 8 o'clock A. M. on the 18th day of October, 1988.

Carmen Ostlie, County Recorder

By \_\_\_\_\_, Deputy

Document No. 225042

## Certificate of Location of Government Corner

This corner was originally established by the government in 1855 and was monumented by a wood post in a mound of earth.

We could find no resurvey information on the corner. The adjoining property owners have accepted the intersection of the center line of the east-west road and fence line to south and field line to north as the correct corner.

On March 21, 1978, we measured the north line of Section 34 and set a temporary corner on the center line of the road and fence line to south. This falls within 3 feet of being on a split between section corners.

On July 7, 1978, we dug for the corner, John Tupa from Hutchinson with a backhoe. We dug a hole approximately 15 feet long along the center line and 6-7 feet wide and 4 feet deep. We found nothing.

We feel the road and the fence have perpetuated the location of the corner and we accepted our temporary corner as the correct location of this obliterated corner.

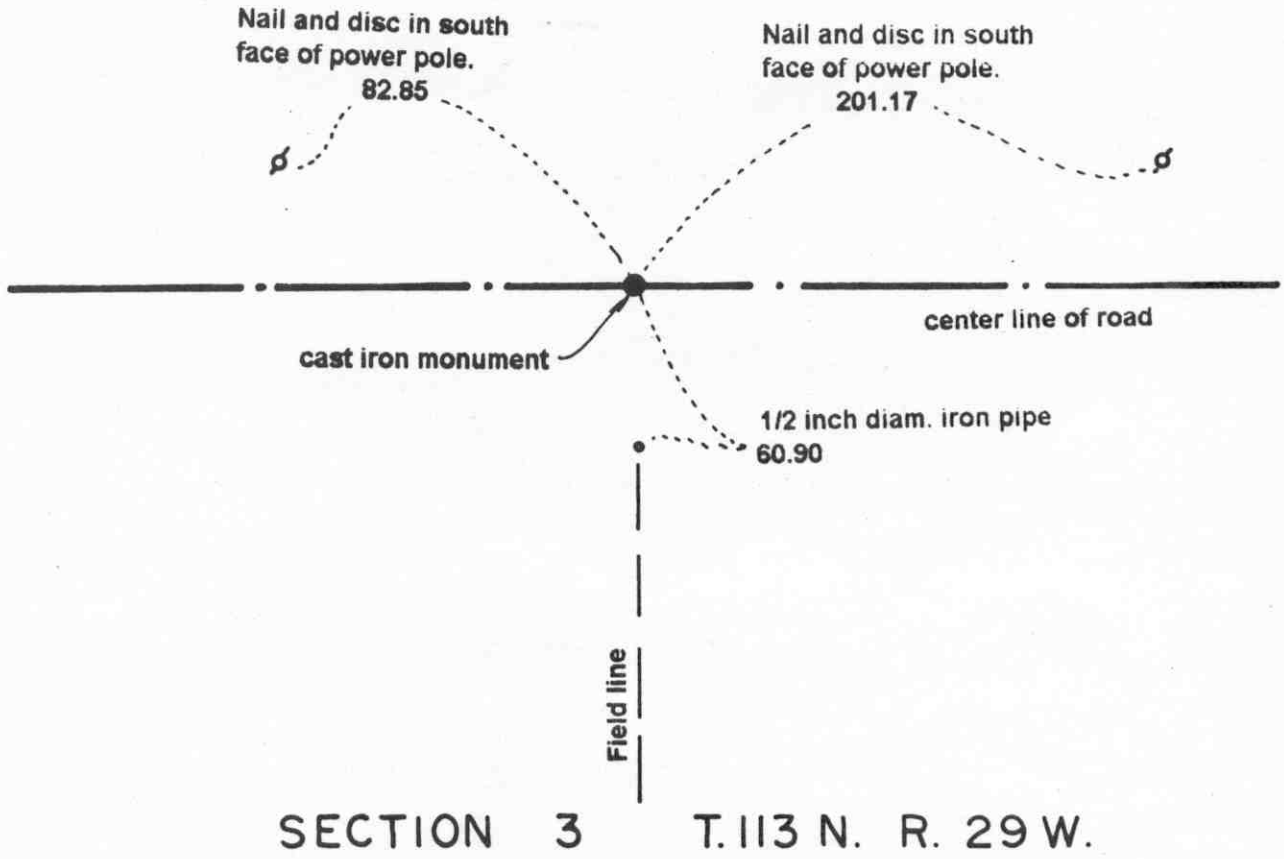
On July 22, 1980, we set a McLeod County cast iron monument at this location and took reference ties.

# Certificate of Location of Government Corner

SOUTH QUARTER corner, Section 34, Township 114 North, Range 29 West

SKETCH OF REFERENCE TIES (NO SCALE)

SECTION 34 T. 114 N. R. 29 W



Statement of evidence relative to this corner location on sheet 2

I hereby certify that this document was prepared by me or under my direct supervision.

Willard Pellinen  
Willard Pellinen  
McLeod County Surveyor  
License No. 9626.

Date Aug. 7, 1995

OFFICE OF THE COUNTY RECORDER  
MCLEOD COUNTY, MINNESOTA

I hereby certify that this document was filed in this office at 9 o'clock A. M. on the 8th day of August 19 95.

CARMEN OSTLIE MAULOFF, MCLEOD COUNTY RECORDER, County Recorder

By Phyllis Sopkowiak, Deputy.

Document No. 267411

**Certificate of Location of Government Corner**  
**South Quarter Corner, Section 34, Township 114 North, Range 29 West**

*1855. John Ryan of the General Land Office originally established this corner. He set a post, deposited charcoal, dug pits and trench, built mound and planted osage orange seeds at the corners of the mound.*

*February 21, 1973. Herbert Wendlandt, 70 years old and had lived in the Southeast Quarter of Section 34 since 1910, said a stone and government stake was found by a surveyor about 15 years ago. He said it was about 1/2 foot to 1 foot west of a fence running south. He said a steel "marker" was set at the corner.*

*July 25, 1973. Dickman Knutson, county surveyor, excavated for the corner, John Tupa from Hutchinson with a backhoe. They found a 1 1/2 inch diameter steel pin in the center line of the east-west road, about 1 foot west of the northerly prolongation of the fence to the south. They left the steel pin in place and took available reference ties.*

*September 19, 1973. Knutson set a McLeod County cast iron monument over the found steel pin and took additional ties.*

*March 27, 1995. We checked the reference ties.*

# Certificate of Location of Government Corner

SOUTHEAST corner, Section 34, Township 114 North, Range 29 West

SKETCH OF REFERENCE TIES (NO SCALE)

T.114 N. R.29W.

SECTION 34

SECTION 35



center line of road

Nail and disc in SW face of power pole

43.36

West edge of street sign

43.65

center line of road

cast iron monument

Nail and disc in NW face of power pole.

94.19

56.26

Nail and disc in NE face of post by telephone pedestal

SECTION 3

SECTION 2

T.113 N. R.29 W.

Statement of evidence relative to this corner location on sheet 2

I hereby certify that this document was prepared by me or under my direct supervision.

Willard Pellinen  
Willard Pellinen  
McLeod County Surveyor  
License No. 9626.

Date June 9, 1995

OFFICE OF THE COUNTY RECORDER  
MCLEOD COUNTY, MINNESOTA

I hereby certify that this document was filed in this office at 2 o'clock P. M. on the 13th day of June 19 95.

GARIBEN OSTLIE BUILDING, MCLEOD COUNTY RECORDER

County Recorder

By Phyllis Sopkoivak, Deputy.

Document No. 266249

**Certificate of Location of Government Corner**  
**Southeast Corner, Section 34, Township 114 North, Range 29 West**

*1855. John Ryan of the General Land Office originally established this corner. He set a post, deposited charcoal, dug pits and trench, built mound and planted osage orange seeds at the corners of the mound.*

*February 12, 1973. Harlan Wendland, 36 years old and had lived in the Northeast Quarter of Section 3 all his life, said Sibley County Surveyor found a stone at the corner in 1953 and set a steel "marker". This was at the center line intersection of the roads.*

*July 25, 1973. Dickman Knutson, county surveyor, excavated for the corner. (John Tupa from Hutchinson with a backhoe) They found a limestone with a sharp point up and an iron pin beside the stone. They took available reference ties.*

*September 20, 1973. Knutson set a McLeod County cast iron monument and took additional ties.*

*March 27, 1995. We found the monument in good condition down 12 inches below the surface of the gravel road and took new reference ties.*

# Certificate of Location of Government Corner

EAST QUARTER corner, Section 35, Township 114 North, Range 29 West

SKETCH OF REFERENCE TIES (NO SCALE)



SECTION 35

SECTION 36

●  
Cast iron monument on line  
and split between northeast  
and southeast corners of  
Section 35.

2641.02 to northeast corner  
2641.02 to southeast corner

## Statement of evidence relative to this corner location on sheet 2

I hereby certify that this document  
was prepared by me or under my  
direct supervision.

Willard Pellinen  
Willard Pellinen  
McLeod County Surveyor  
License No. 9626.

Date July 5, 1995

## OFFICE OF THE COUNTY RECORDER MCLEOD COUNTY, MINNESOTA

I hereby certify that this document was filed in this office at 9  
o'clock A.M. on the 18th day of July  
19 95.

Carmen Ostlie Mulder, County Recorder

By \_\_\_\_\_, Deputy.

Document No. 266989



**Certificate of Location of Government Corner**  
**East Quarter Corner, Section 35, Township 114 North, Range 29 West**

*July 1855. A. H. Runyon of the General Land Office originally established this corner. He set a post, drove a charred stake, raised mound of earth with trench and pits and planted maclura seeds at the corners of the mound.*

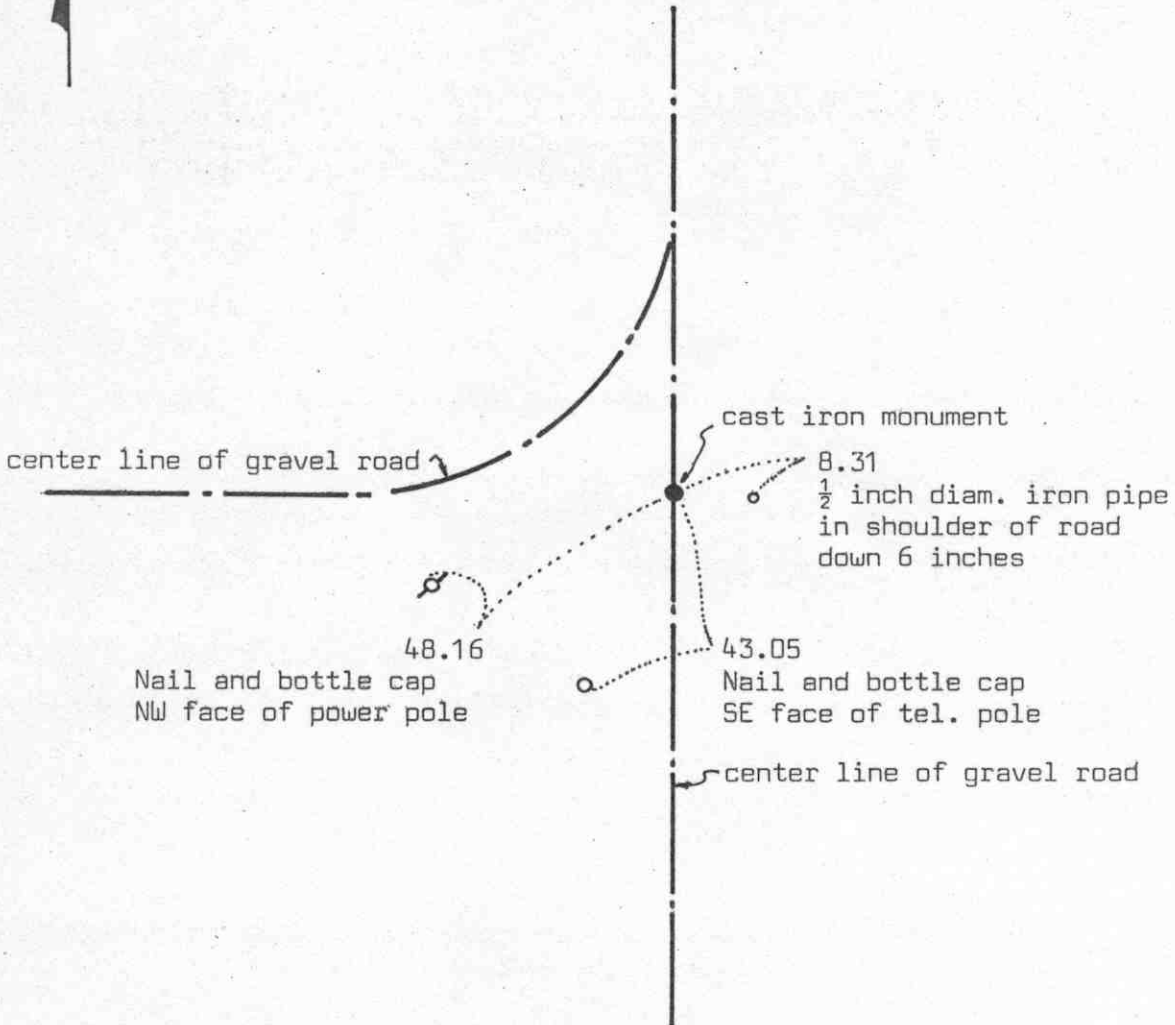
*1983. There were no property lines at this corner to help locate the government corner. Same owner on all sides.*

*January 21, 1983. We measured the east line of Section 35 and set an iron pipe on line and split between the section corners. Fence corner 1/4 mile south is halfway between this corner and the southeast corner of Section 35 and within 4 feet of being on line. Field line and old post near center of Section 35 is about 12 feet south of the east-west quarter line of Section 35. Field division 1/4 mile east is within 2 feet of being on east-west quarter line of Section 36, but field line 3/4 mile east is about 20 feet south of the quarter line.*

*June 6, 1983. We set a McLeod County cast iron monument at the corner and took angular ties.*

### Certificate of Location of Government Corner

SKETCH OF REFERENCE TIES  
(NO SCALE)



Statement of evidence relative to this corner location on sheet 2

I hereby certify that this document was prepared by me or under my direct supervision.

Willard Pellinen  
 Willard Pellinen  
 McLeod County Surveyor  
 License No. 9626  
 Date 5/14/89

OFFICE OF THE COUNTY RECORDER  
MCLEOD COUNTY, MINNESOTA.

I hereby certify that this document was filed in this office at 9 o'clock A.M. on the 18th day of July, 1989.

Carmen Ostlie, County Recorder  
 By \_\_\_\_\_, Deputy  
 Document No. 229053

## Certificate of Location of Government Corner

This corner was originally set by the Government Land Office in 1855. A.W.Runyon set a post, drove charred stake, raised a mound of earth with trench and pits as per instructions.

1937 survey by E.L.Higgins shows an iron monument at this corner.

July 7, 1978. We dug for the corner, John Tupa from Hutchinson with a backhoe. We found a 1 inch diameter iron pin down  $\frac{1}{2}$  foot. We tied off the iron pin (iron pin was 4 feet long) and pulled it out. We dug a hole 6 feet by 6 feet down to below the original ground but found nothing else. We buried the iron pin in the hole.

July 22, 1978. We set a 4 inch spike at the corner and took additional ties.

July 22, 1980. Theophil Schuft, 67 years old, in Southeast Quarter of Section 26 for 21 years says center line of north-south and easterly extension of center line of road from west should be the correct section corner. The iron pin we found in 1978 was at this location. We set a McLeod County cast iron monument in place of the spike.

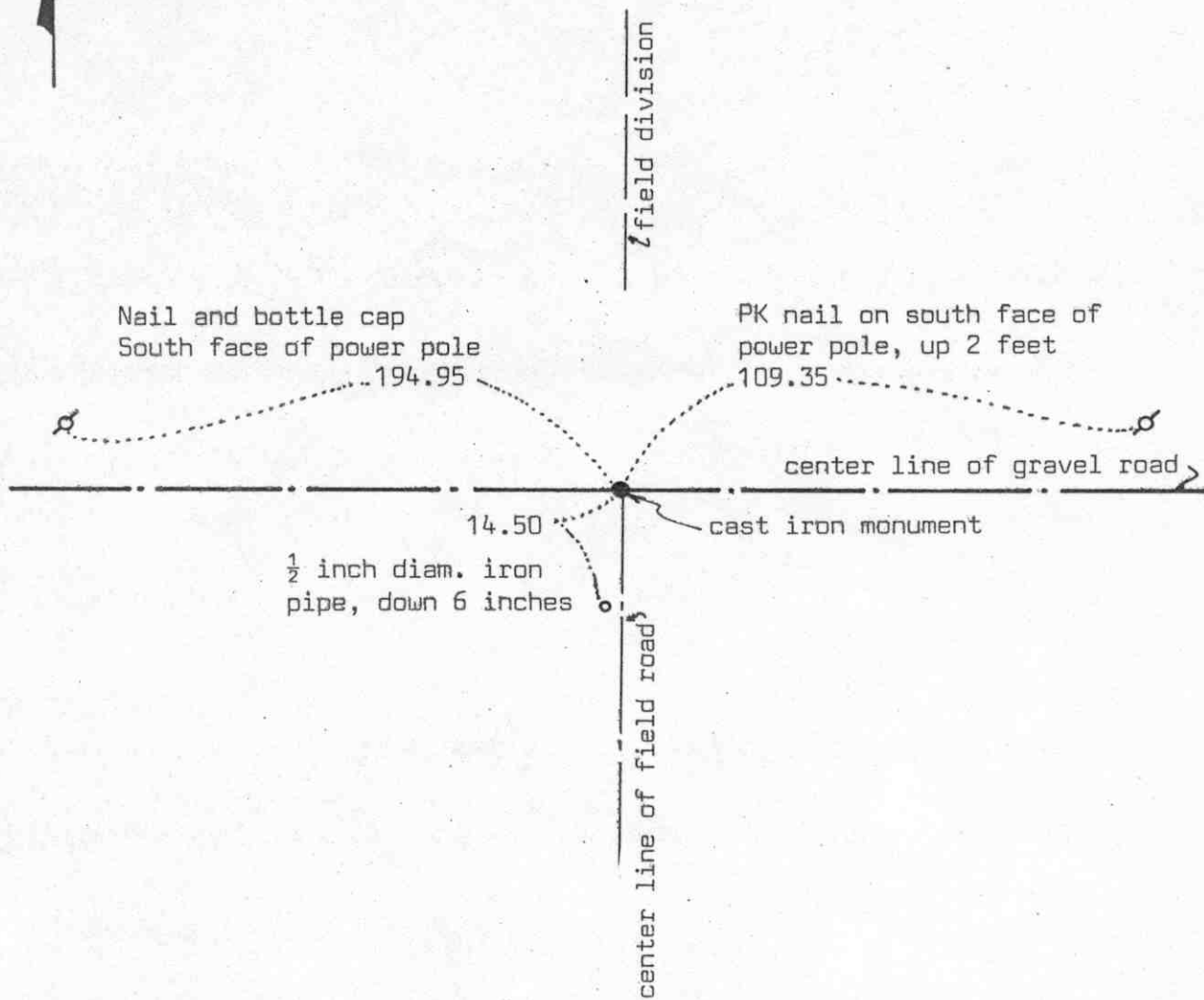
February 16, 1989. Reference ties checked ok.

We accept the found iron pin as having perpetuated the correct location of the section corner.

# Certificate of Location of Government Corner



SKETCH OF REFERENCE TIES  
(NO SCALE)



Statement of evidence relative to this corner location on sheet 2

I hereby certify that this document was prepared by me or under my direct supervision.

Willard Pellinen

Willard Pellinen  
McLeod County Surveyor  
License No. 9626

Date 5/14/89

OFFICE OF THE COUNTY RECORDER  
MCLEOD COUNTY, MINNESOTA.

I hereby certify that this document was filed in this office at 9 o'clock A.M. on the 18th day of July, 19 89.

Carmen Ostlie, County Recorder  
By \_\_\_\_\_, Deputy

Document No. 229054

NORTH QUARTER corner, Section 35, Township 114 North, Range 29 West

## Certificate of Location of Government Corner

This corner was originally set by the Government Land Office in 1855. A.W.Runyon set a post at the the corner, drove a charred stake, raised a mound of earth with trench and pits as per instructions.

On July 7, 1978, we dug for the corner, John Tupa from Hutchinson with a backhoe. We found 2 stones, 8 inch and 10 inch diameter. Top stone was down 1 foot below the road surface. We took a photo and reference ties. This was within  $1\frac{1}{2}$  feet of being half way between section corners.

September 28, 1978. We set a railroad spike at the corner and took additional reference ties.

July 22, 1980. We talked with Gerhard Becker, 54 years old, in the Southwest Quarter of Section 26 for 26 years, says this is the correct location of the quarter corner. Mr. Clarence Schatz, in the Northwest Quarter of Section 35 agrees. We replaced the railroad spike with a McLeod County cast iron monument.

February 17, 1989. We found the monument in good condition and the reference ties still good.

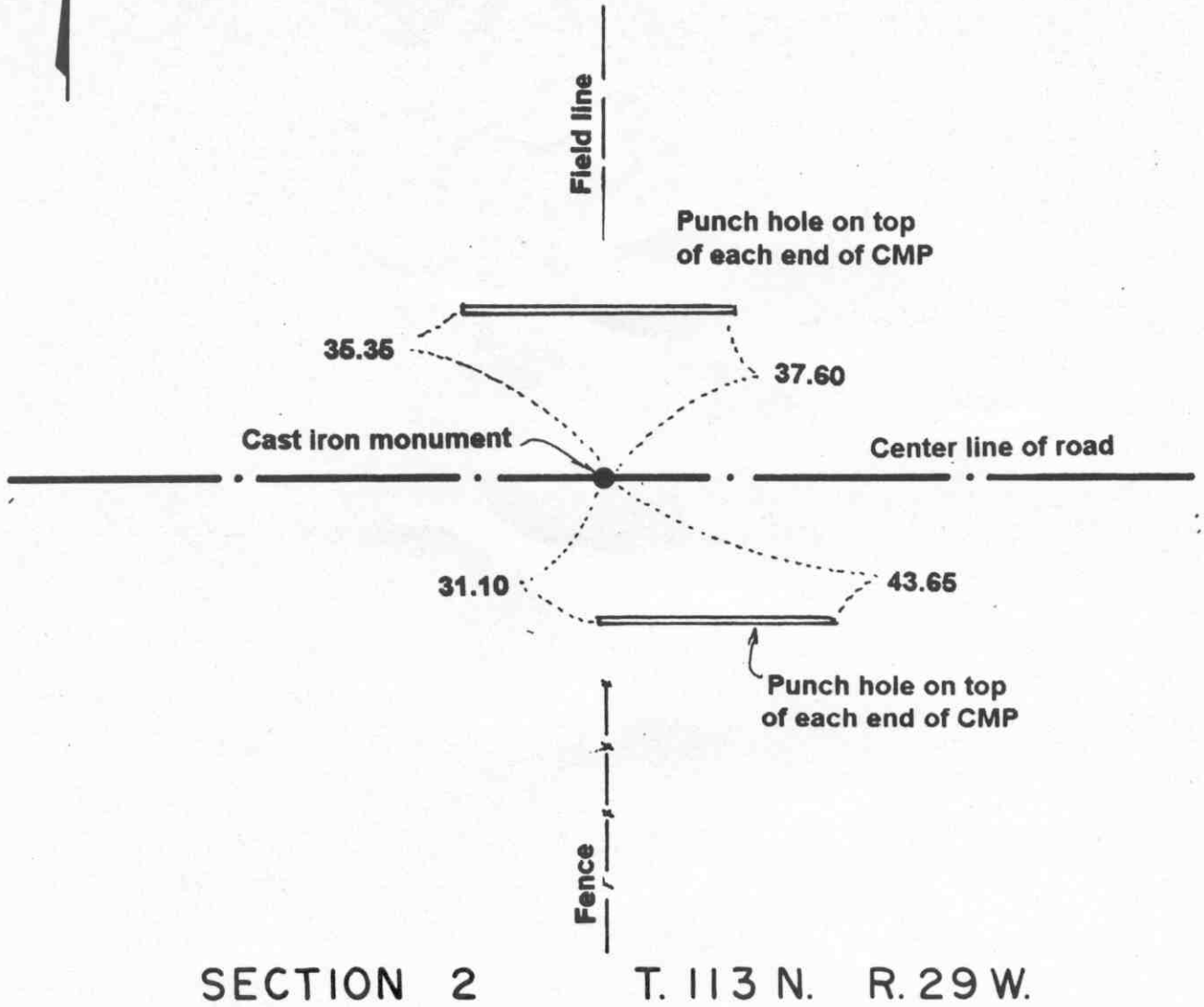
We accept the found stones as having perpetuated the correct location of the quarter corner.

# Certificate of Location of Government Corner

SOUTH QUARTER corner, Section 35, Township 114 North, Range 29 West

SKETCH OF REFERENCE TIES (NO SCALE)

SECTION 35 T. 114 N. R. 29 W.



Statement of evidence relative to this corner location on sheet 2

I hereby certify that this document was prepared by me or under my direct supervision.

Willard Pellinen  
Willard Pellinen  
McLeod County Surveyor  
License No. 9626.

Date Dec. 22, 1995

OFFICE OF THE COUNTY RECORDER  
MCLEOD COUNTY, MINNESOTA

I hereby certify that this document was filed in this office at 9 o'clock A. M. on the 9th day of January 19 96.

Carmen Estlie Mulder, County Recorder

By Charleen Engelman, Deputy.

Document No. 270178

**Certificate of Location of Government Corner**  
**South Quarter Corner, Section 35, Township 114 North, Range 29 West**

**1855. John Ryan of the General Land Office originally established this corner. He set a post in a marsh, deposited charcoal, dug pits and trench, built a mound and planted osage orange seeds at the corners of the mound.**

**1973. Reuben Wendland, in the Southwest Quarter of Section 35, said the intersection of the center of the east-west road, field line north, is the quarter corner. Walter Henke, in the Northwest Quarter of Section 2 said the center of the road in line with the fence to the south is the quarter corner.**

**July 25, 1973. Dickman Knutson, McLeod County Surveyor, excavated for the corner. (John Tupa from Hutchinson with a backhoe) They dug a hole 8 feet by 5 feet by 4 feet deep but found no evidence of the government corner.**

**September 20, 1973. Knutson set a McLeod County cast iron monument in the center of the east-west road in line with the fence to the south and the field line to the north and took available reference ties.**

**April 28, 1995. We checked the reference ties to the monument.**

# Certificate of Location of Government Corner

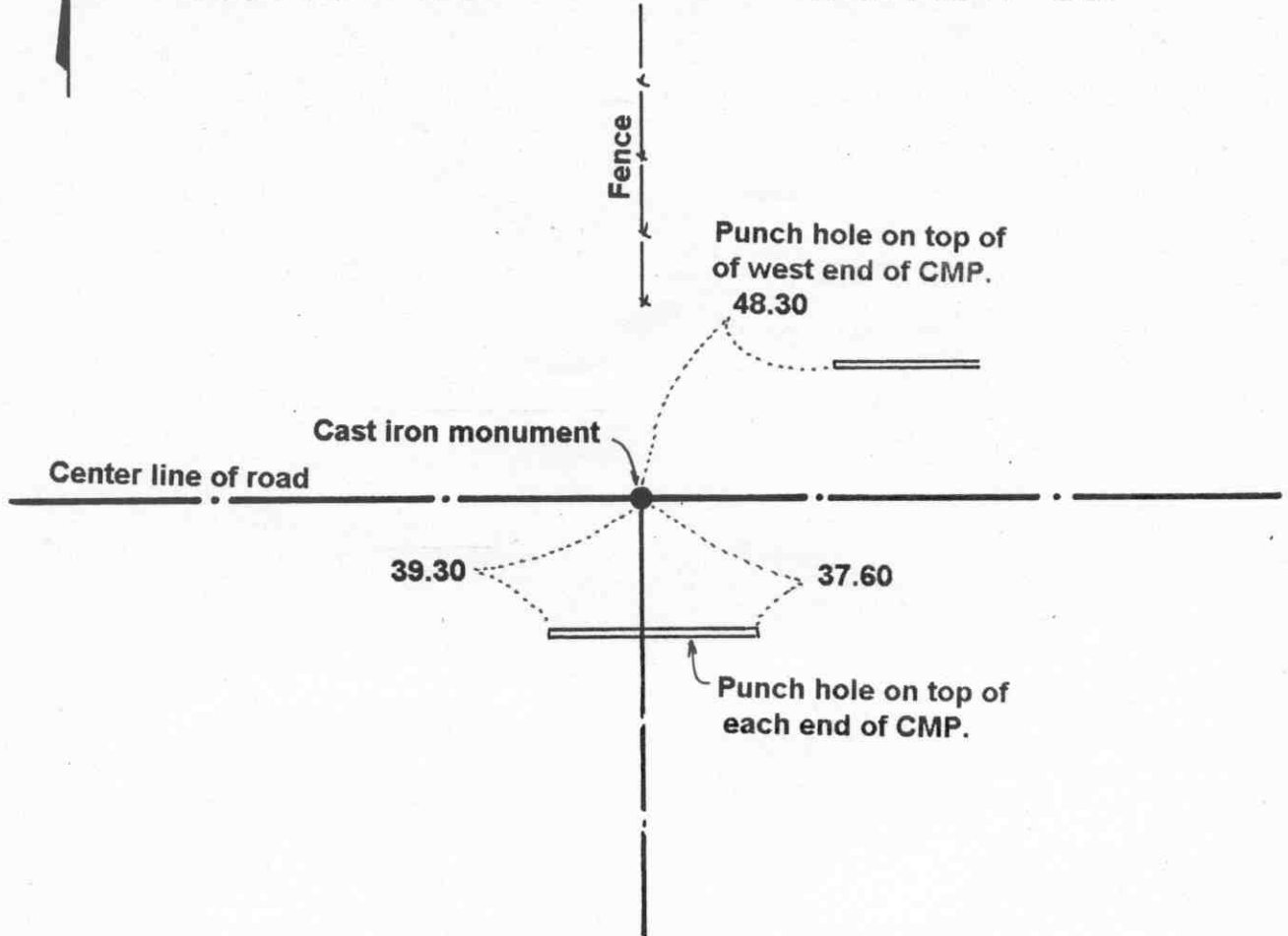
SOUTHEAST corner, Section 35, Township 114 North, Range 29 West

SKETCH OF REFERENCE TIES (NO SCALE)

T. 114N. R. 29W

SECTION 35

SECTION 36



SECTION 2

SECTION 1

T. 113N. R. 29W.

Statement of evidence relative to this corner location on sheet 2

I hereby certify that this document was prepared by me or under my direct supervision.

Willard Pellinen  
Willard Pellinen  
McLeod County Surveyor  
License No. 9626.

Date Dec. 22, 1995

OFFICE OF THE COUNTY RECORDER  
MCLEOD COUNTY, MINNESOTA

I hereby certify that this document was filed in this office at 9 o'clock A.M. on the 9th day of January 19 96.

Carmen Estlie Mulder, County Recorder

By Charleen Engelman, Deputy.

Document No. 270177



**Certificate of Location of Government Corner**  
**Southeast Corner, Section 35, Township 114 North, Range 29 West**

*1855. John Ryan of the General Land Office originally established this corner. He set a post in a marsh, deposited charcoal, dug pits and trench, built mound and planted osage orange seeds at the corners of the mound.*

*March 26, 1973. Dickman Knutson, county surveyor, set a temporary section corner at the center line of the east-west road in line with a fence to the north. Adjacent property owners have accepted this location as the section corner.*

*July 25, 1973. Knutson excavated for the corner. (John Tupa from Hutchinson with a backhoe) They found found a 1/2 inch diameter iron pipe down 2 feet below the surface of the road. They took reference ties and below the pipe they found a 6 inch diameter stone, 3 feet below the surface.*

*September 20, 1973. Knutson set a McLeod County cast iron monument and took additional reference ties.*

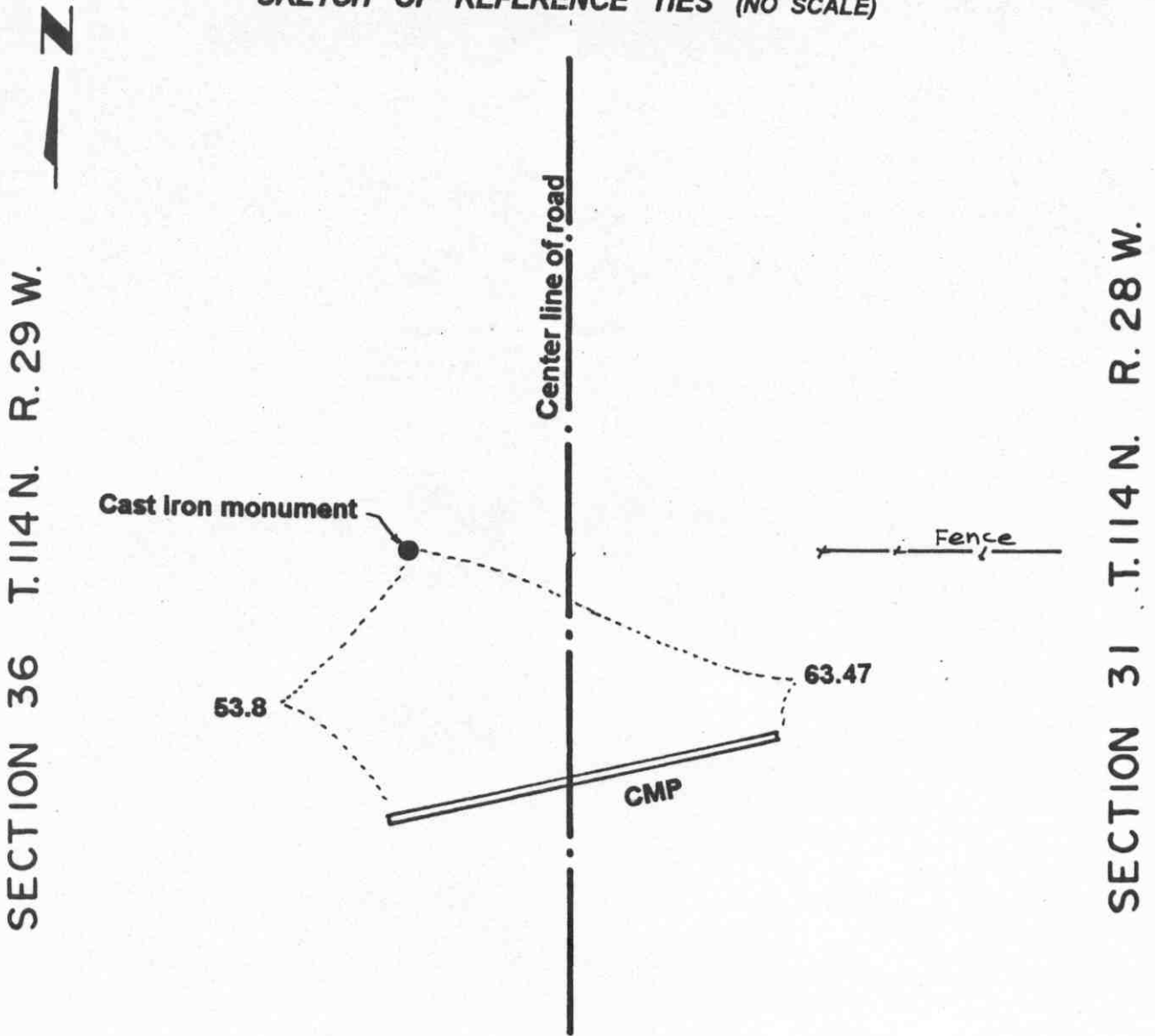
*January, 1995. The monument set by Knutson is accepted as marking the location of the government corner.*

*April 28, 1995. We checked the reference ties.*

# Certificate of Location of Government Corner

EAST QUARTER corner, Section 36, Township 114 North, Range 29 West

SKETCH OF REFERENCE TIES (NO SCALE)



## Statement of evidence relative to this corner location on sheet 2

I hereby certify that this document was prepared by me or under my direct supervision.

Willard Pellinen

Willard Pellinen  
McLeod County Surveyor  
License No. 9626.

Date Dec. 13, 1995

## OFFICE OF THE COUNTY RECORDER MCLEOD COUNTY, MINNESOTA

I hereby certify that this document was filed in this office at 9 o'clock A. M. on the 9th day of January 19 96.

Carmen Estelle Mulder, County Recorder

By Charleen Engelman, Deputy.

Document No. 270179

**Certificate of Location of Government Corner**  
**East Quarter Corner, Section 36, Township 114 North, Range 29 West**

**1855. John Ryan of the General Land Office established this corner. He set a post, deposited charcoal, dug pits and trench, built a mound and planted osage orange seeds at the corners of the mound.**

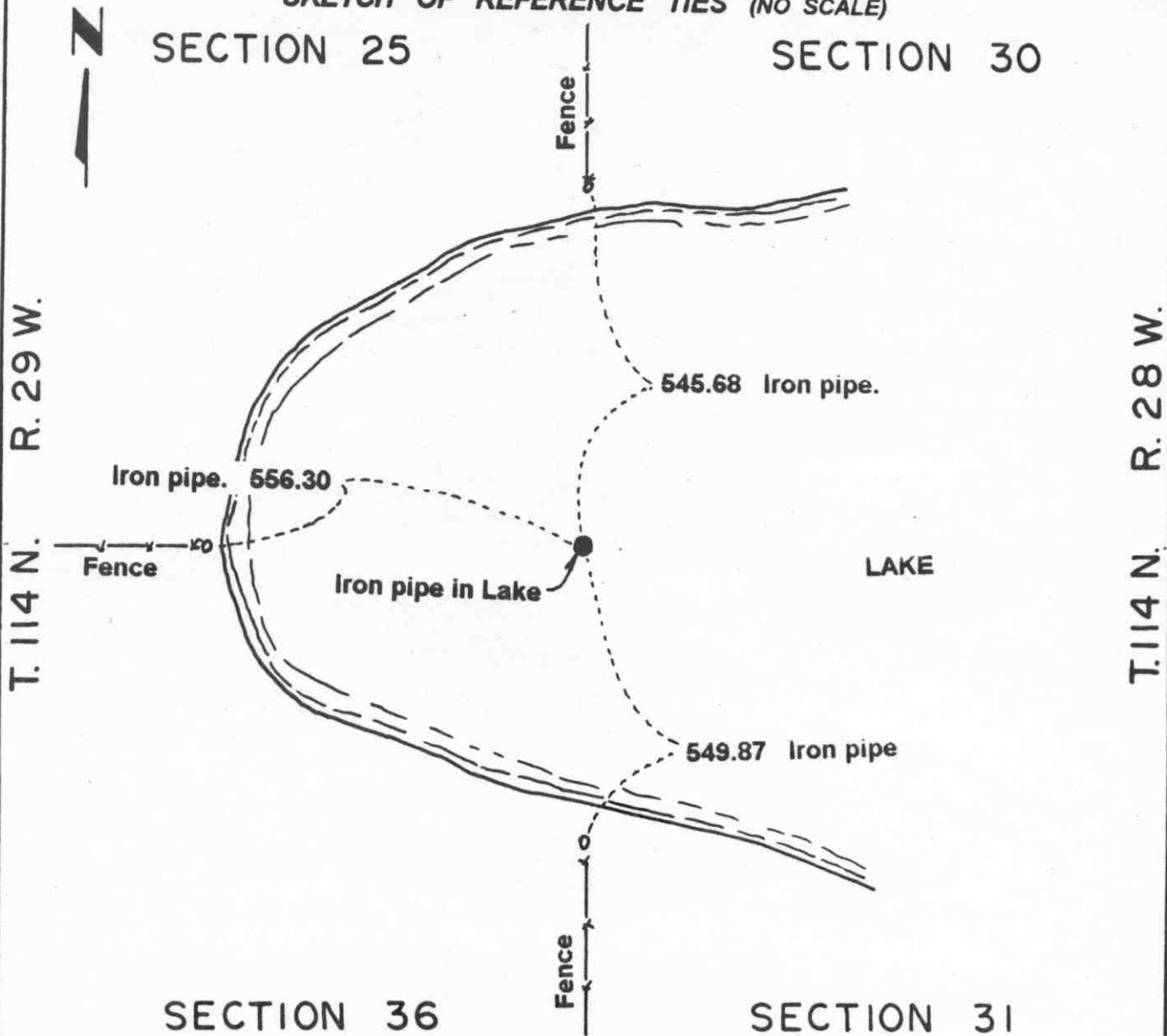
**1973. Delbert Rieke, Sibley County Surveyor, set a cast iron monument in the center of the ditch on the west side of the north-south road in line with a fence to the east, as per testimony by Marvin Kuehl, who owned part of the East Half of Section 26. This location was accepted by Dickman Knutson, McLeod County Surveyor.**

**April 28, 1995. We checked the reference ties.**

# Certificate of Location of Government Corner

NORTHEAST corner, Section 36, Township 114 North, Range 29 West

SKETCH OF REFERENCE TIES (NO SCALE)



Statement of evidence relative to this corner location on sheet 2

I hereby certify that this document was prepared by me or under my direct supervision.

Willard Pellinen  
 Willard Pellinen  
 McLeod County Surveyor  
 License No. 9626.

Date July 5, 1995

OFFICE OF THE COUNTY RECORDER  
 MCLEOD COUNTY, MINNESOTA

I hereby certify that this document was filed in this office at 9 o'clock A. M. on the 18th day of July, 1995.

Carmen Ostlund-Juelder, County Recorder

By \_\_\_\_\_, Deputy.

Document No. 266990

**Certificate of Location of Government Corner**  
**Northeast Corner, Section 36, Township 114 North, Range 29 West**

**1855. John Ryan of the General Land Office set a witness corner to this section corner 7 chains (462 feet) south of the actual corner which fell in a lake.**

**1937. E. L. Higgins', surveyor, field notes show this corner in the lake, 1318.78 feet east of the 1/16 line fence and on line with the fence to the west.**

**1974. Delbert Rieke, Sibley County Surveyor, talked with John Frauenkienst, in the Northwest Quarter of Section 31 and Halbert Becker, in the Southeast Quarter of Section 25. Both men said the fence to the west is along the section line. Rieke set an iron pipe in the lake, in line with the fence to the west and on line with the fences along the east line of Sections 25 and 36.**

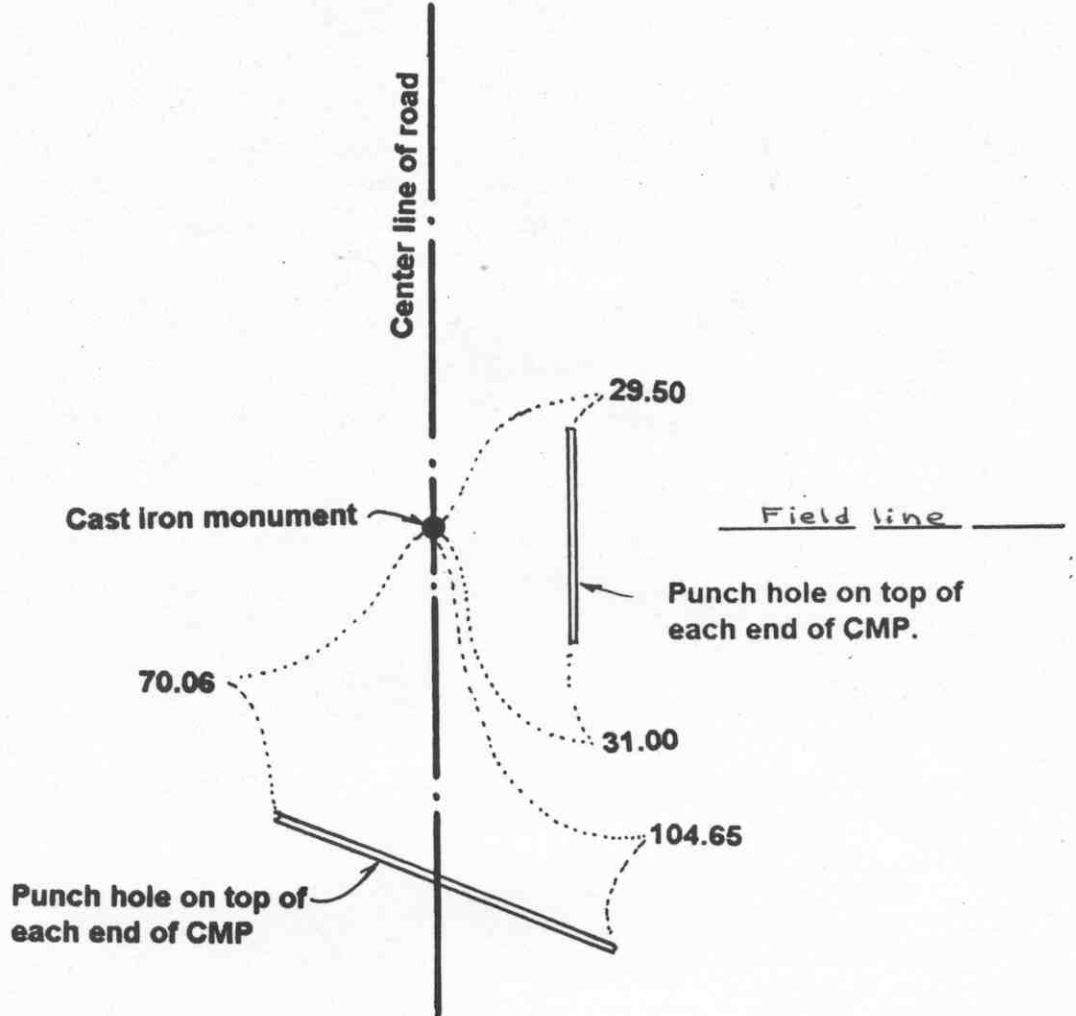
**1974. Dickman Knutson, McLeod County Surveyor, accepted the iron pipe set by Rieke as marking the location of the section corner.**

# Certificate of Location of Government Corner

NORTH QUARTER corner, Section 36, Township 114 North, Range 29 West

SKETCH OF REFERENCE TIES (NO SCALE)

SECTION 25



SECTION 36

Statement of evidence relative to this corner location on sheet 2

I hereby certify that this document was prepared by me or under my direct supervision.

Willard Pellinen  
Willard Pellinen  
McLeod County Surveyor  
License No. 9626.

Date Nov. 6, 1995

OFFICE OF THE COUNTY RECORDER **269318**  
MCLEOD COUNTY, MINNESOTA

I hereby certify that this document was filed in this office at 9 o'clock A. M. on the 14th day of November 19 95.

Carmen Ostlie Mulder, County Recorder

By \_\_\_\_\_, Deputy.

Document No. \_\_\_\_\_

**Certificate of Location of Government Corner**  
**North Quarter Corner, Section 36, Township 114 North, Range 29 West**

*July 1855. A. H. Runyon of the General Land Office originally established this corner. He set a post, drove a charred stake, raised mound of earth with trench and pits and planted maclura seeds at the southeast corner of the mound.*

*July 7, 1978. Dickman Knutson, county surveyor, excavated for the corner in the center line of the north-south road in line with a field division to the east. (John Tupa from Hutchinson with a backhoe) This location had been accepted by adjacent land owners as the quarter corner. Down 2 1/2 feet below the surface of the road they found a very rotted wood stake. This stake was so rotted only the outside edges and a spot in the center was visible. Top of stake was about 3 inches by 2 inches and tapered to a sharp point about 3 feet below the surface. Knutson took available reference ties. This possibly was the remains of the original government corner.*

*July 20, 1978. Knutson set a spike at the corner and took additional ties.*

*August 13, 1979. Knutson set a McLeod County cast iron monument at the corner.*

*January, 1995. The monument set by Knutson is accepted as marking the location of the government corner. It fits long standing occupation lines and it perpetuates the location of an older monument which was possibly the original government corner.*

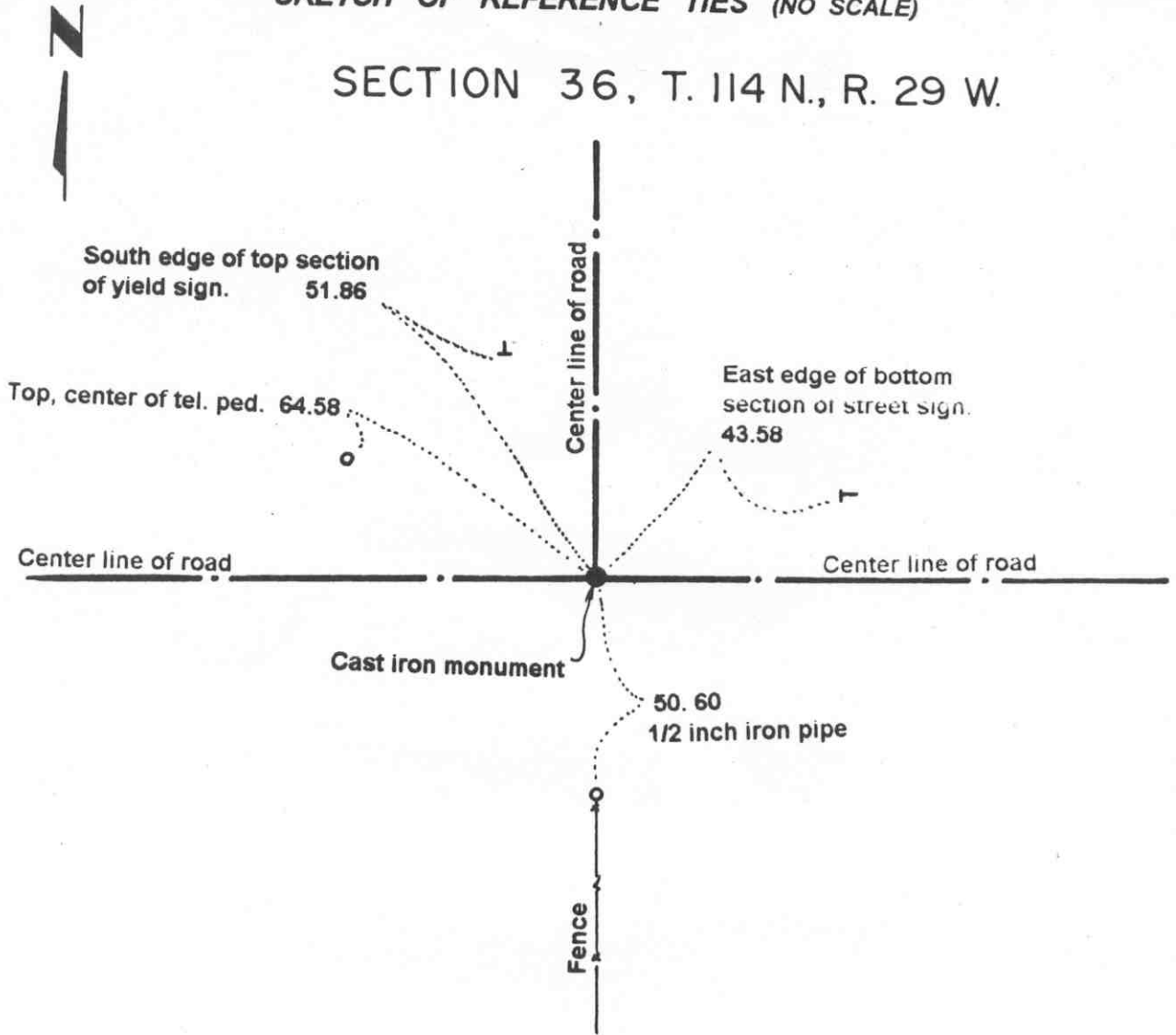
*April 28, 1995. We checked the reference ties.*

# Certificate of Location of Government Corner

SOUTH QUARTER corner, Section 36, Township 114 North, Range 29 West

SKETCH OF REFERENCE TIES (NO SCALE)

SECTION 36, T. 114 N., R. 29 W.



SECTION 1, T. 113 N., R. 29 W.

### Statement of evidence relative to this corner location on sheet 2

I hereby certify that this document was prepared by me or under my direct supervision.

Willard Pellinen  
Willard Pellinen  
McLeod County Surveyor  
License No. 9626.

Date Sept. 7, 1995

### OFFICE OF THE COUNTY RECORDER MCLEOD COUNTY, MINNESOTA

I hereby certify that this document was filed in this office at 9 o'clock A. M. on the 14th day of Sept 19 95.

Carmen Oshier Mulder, County Recorder

By \_\_\_\_\_, Deputy.

Document No. 268037



**Certificate of Location of Government Corner**  
**South Quarter Corner, Section 36, Township 114 North, Range 29 West**

*1855. John Ryan of the General Land Office originally established this corner. He set a post in a marsh, deposited charcoal, dug pits and trench, built mound and planted osage orange seeds at the corners of the mound.*

*1973. Harvey Boettcher, 44 years old and had lived in the Northwest Quarter of Section 1 all his life, said fence running south is about 30 years old and has been accepted as being on the north-south quarter line of Section 1. Clarence Kuehl, 43 years old and had lived in the Southwest Quarter of Section 36 all his life, said the intersection of the road center lines should be the corner.*

*March 26, 1973. Dickman Knutson, county surveyor, excavated for the corner. (John Tupa from Hutchinson with a backhoe) They found a 2 inch by 2 inch by 14 inch wood hub at the center line intersection of roads east-west-north and in line with a fence to the south. They took reference ties and dug more but found no other evidence of the government corner.*

*September 20, 1973. Knutson set a McLeod County cast iron monument and took additional ties.*

*April 10, 1995. We found the monument in good condition down 12 inches below the surface and took new reference ties.*

# Certificate of Location of Government Corner

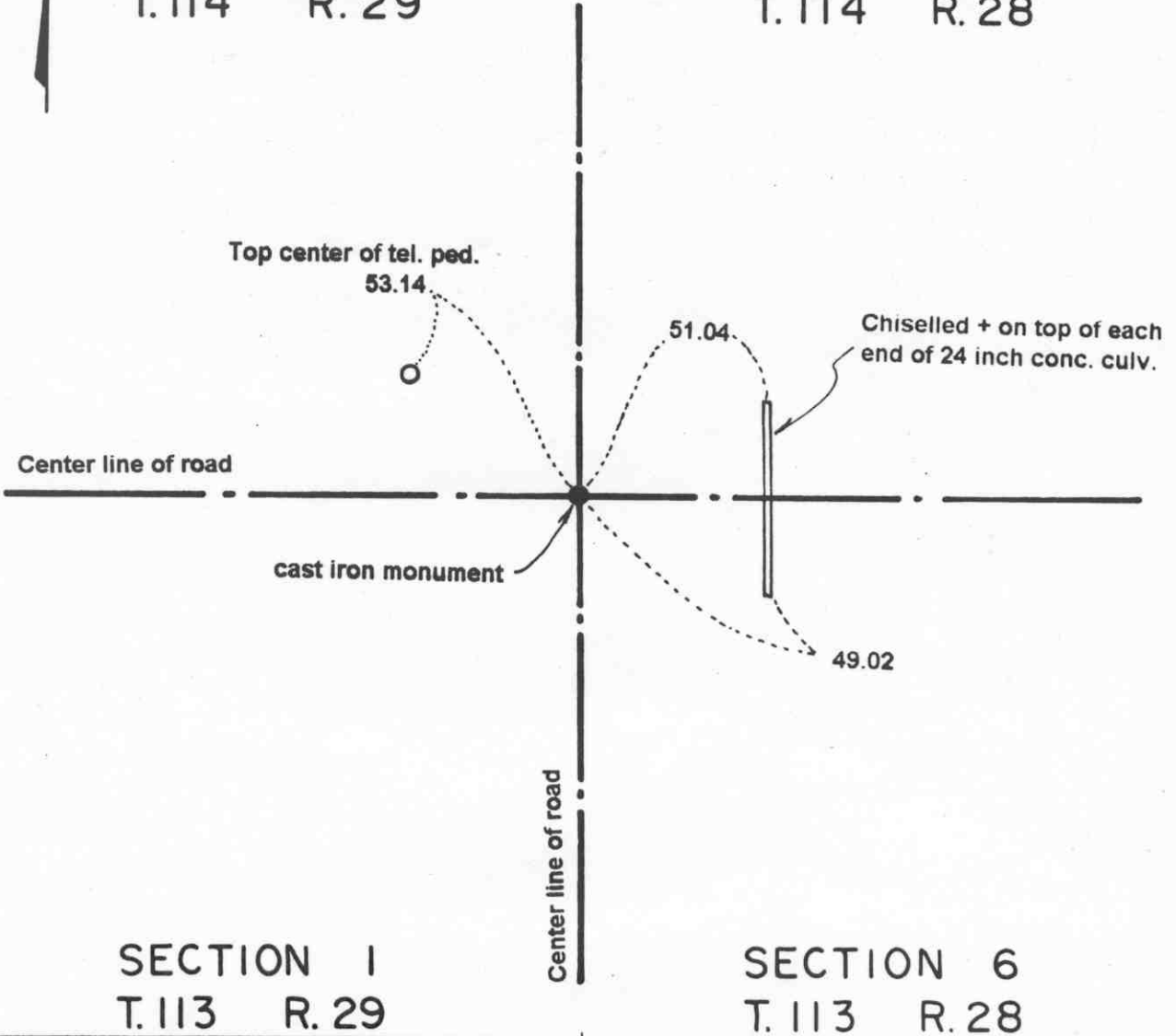
SOUTHEAST corner, Section 36, Township 114 North, Range 29 West

SKETCH OF REFERENCE TIES (NO SCALE)



SECTION 36  
T.114 R.29

SECTION 31  
T.114 R.28



SECTION 1  
T.113 R.29

SECTION 6  
T.113 R.28

Statement of evidence relative to this corner location on sheet 2

I hereby certify that this document was prepared by me or under my direct supervision.

Willard Pellinen  
Willard Pellinen  
McLeod County Surveyor  
License No. 9626.

Date June 9, 1995

OFFICE OF THE COUNTY RECORDER  
MCLEOD COUNTY, MINNESOTA

I hereby certify that this document was filed in this office at 2 o'clock P.M. on the 13th day of June 19 95.

CARREN OSTLE BUILDFR, MCLEOD COUNTY RECORDER

County Recorder

By Phyllis Sopkowiak, Deputy.

Document No. 266250

**Certificate of Location of Government Corner**  
**Southeast Corner, Section 36, Township 114 North, Range 29 West**

*February 12, 1973. Walt Mueffelman, 51 years old and lived in the Northwest Quarter of Section 6, Township 113, Range 28 all his life, said his father told him there was a stone, flat on top, marking the corner and was supposed to be close to the center line intersection of the roads. He said the east-west road was rebuilt 8 years ago and the north-south road was rebuilt 12 years ago.*

*1973. Delbert Rieke, Sibley County Surveyor, found a 4 inch square stone with a lath along side, 3 feet below the surface of the road. This was near the center line intersection of roads north, south, east and west. A stone was recorded at the corner by A. Lehman, Sibley County Engineer in 1933. Rieke set a cast iron monument at the corner.*

*March 27, 1995. We found the monument in good condition down 12 inches below the surface of the gravel road and took new reference ties.*